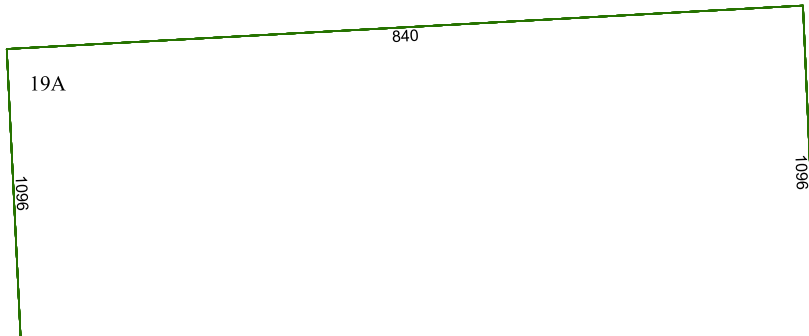


6152A12

6152C3

BAYPORT
SEC 1 U/R
100-515



6152C8

Harris Central Appraisal District



0 45 90 180 Feet

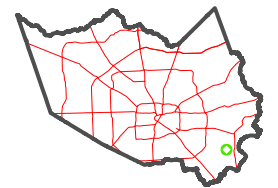
PUBLICATION DATE:
1/4/2023

Geospatial or map data maintained by the Harris Central Appraisal District is for informational purposes and may **not** have been prepared for or be suitable for legal, engineering, or surveying purposes. It does **not** represent an on-the-ground survey and only represents the approximate location of property boundaries.



6152D1

MAP LOCATION



FACET 6152C4

10	11	12	9	10
2	3	4	1	2
6	7	8	5	6