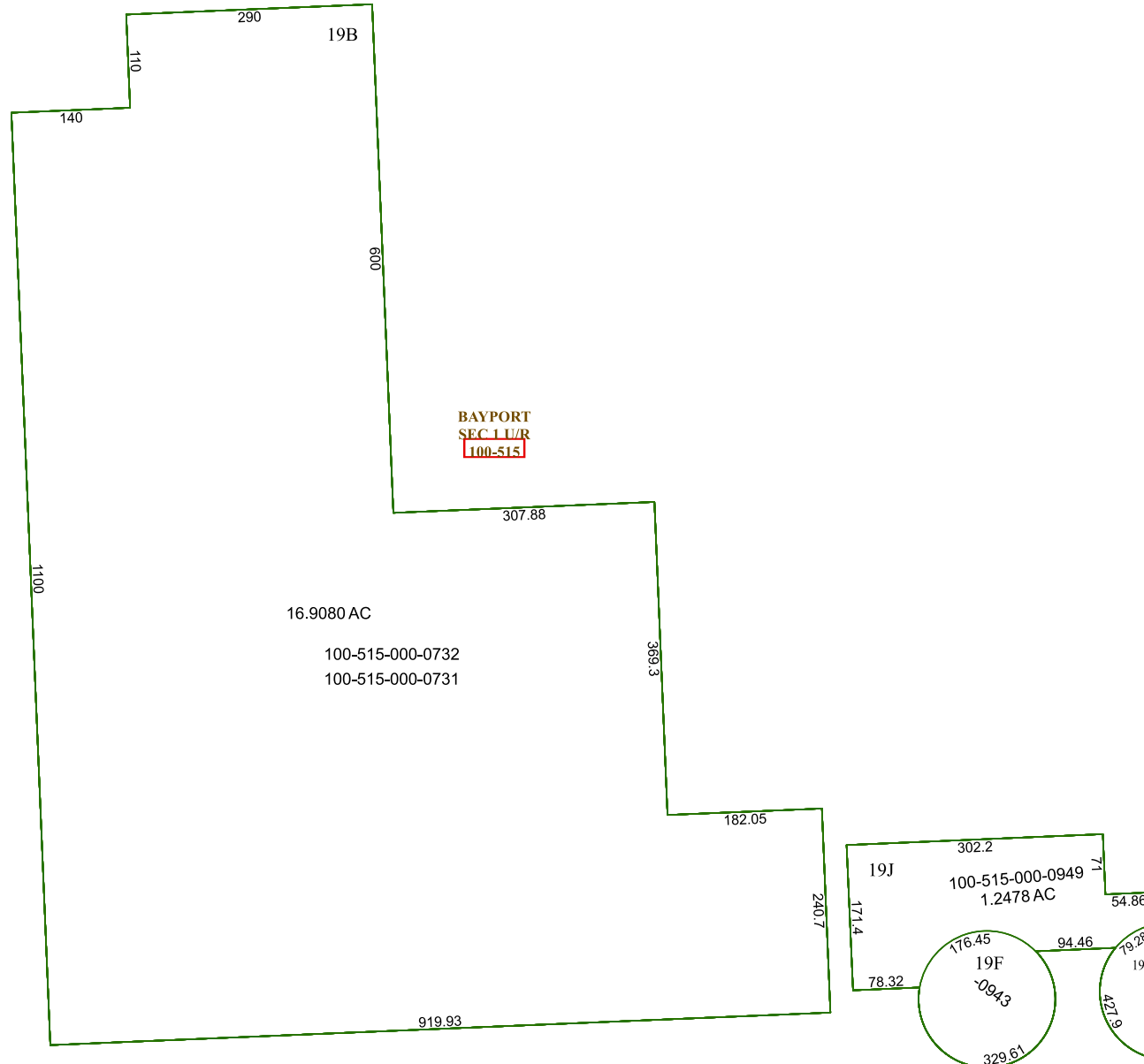


6152D1

6152C8



6152D9

Harris Central Appraisal District



0 45 90 180
Feet

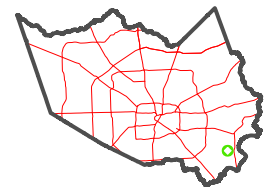
PUBLICATION DATE:
1/4/2023

Geospatial or map data maintained by the Harris Central Appraisal District is for informational purposes and may not have been prepared for or be suitable for legal, engineering, or surveying purposes. It does not represent an on-the-ground survey and only represents the approximate location of property boundaries.



6152D6

MAP LOCATION



FACET 6152D5

3	4	1	2	3
7	8	5	6	7
11	12	9	10	11