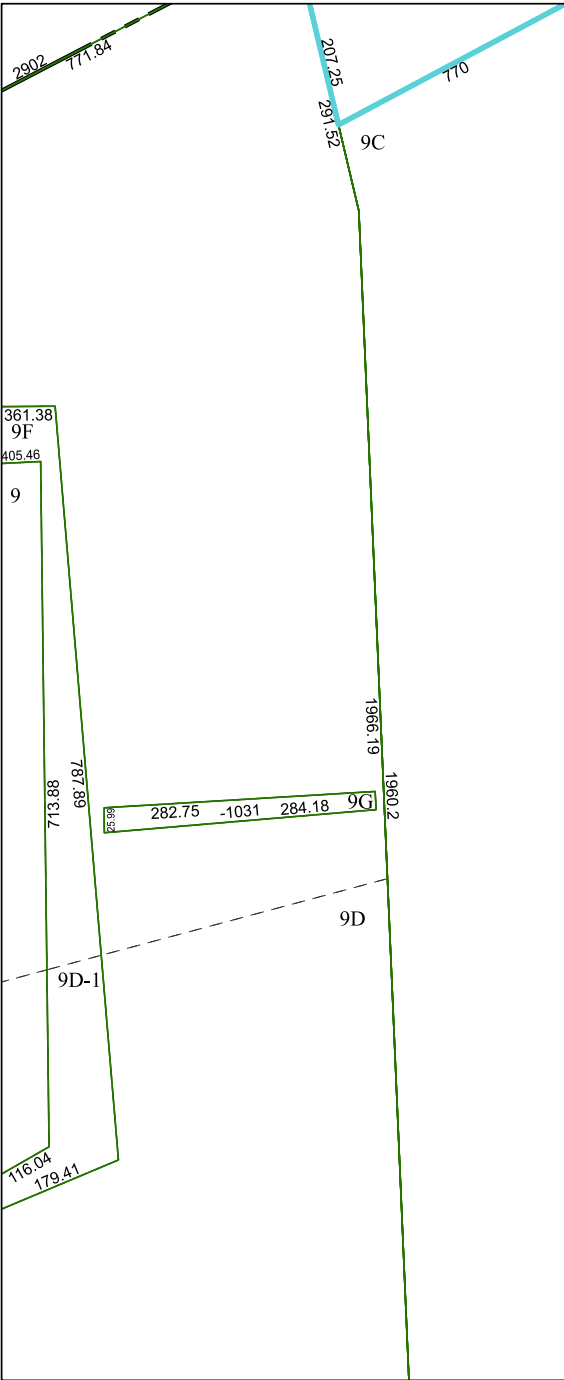


6152D4

WY AREA BOULEVARD



- 100-515-000-0095
- 100-515-000-0470
- 100-515-000-0591
- 100-515-000-0696
- 100-515-000-0728

11400
45.7300 AC

BAYPORT
SEC 11 U/R
100-515

6152D12

Harris Central Appraisal District



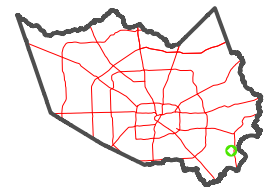
0 45 90 180 Feet

PUBLICATION DATE:
4/22/2024

Geospatial or map data maintained by the Harris Central Appraisal District is for informational purposes and may not have been prepared for or be suitable for legal, engineering, or surveying purposes. It does not represent an on-the-ground survey and only represents the approximate location of property boundaries.



MAP LOCATION



FACET 6152D8

2	3	4	1	2
6	7	8	5	6
10	11	12	9	10

6152D7

6252C5