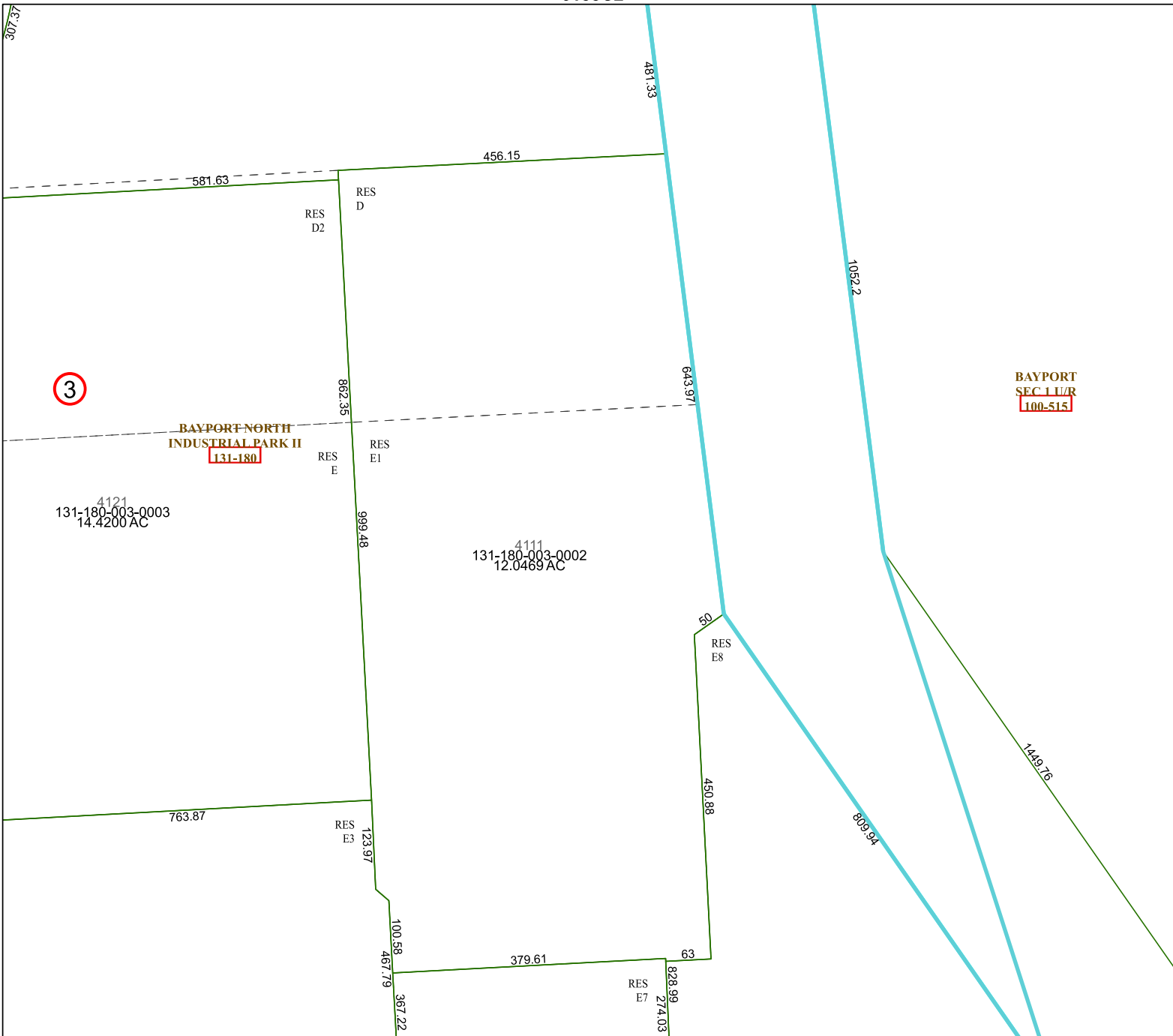


6153C2

6153C5

6153C10



BAYPORT
SEC 1 U/R
100-515

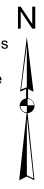
Harris Central Appraisal District



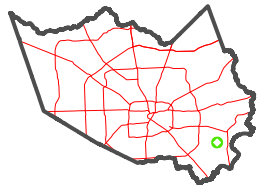
0 45 90 180 Feet

PUBLICATION DATE:
1/4/2023

Geospatial or map data maintained by the Harris Central Appraisal District is for informational purposes and may not have been prepared for or be suitable for legal, engineering, or surveying purposes. It does not represent an on-the-ground survey and only represents the approximate location of property boundaries.



MAP LOCATION



FACET 6153C6

4	1	2	3	4
8	5	6	7	8
12	9	10	11	12