

6154B9

# Harris Central Appraisal District



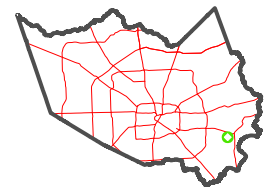
0 45 90 180 Feet

PUBLICATION DATE: 1/13/2025

Geospatial or map data maintained by the Harris Central Appraisal District is for informational purposes and may not have been prepared for or be suitable for legal, engineering, or surveying purposes. It does not represent an on-the-ground survey and only represents the approximate location of property boundaries.



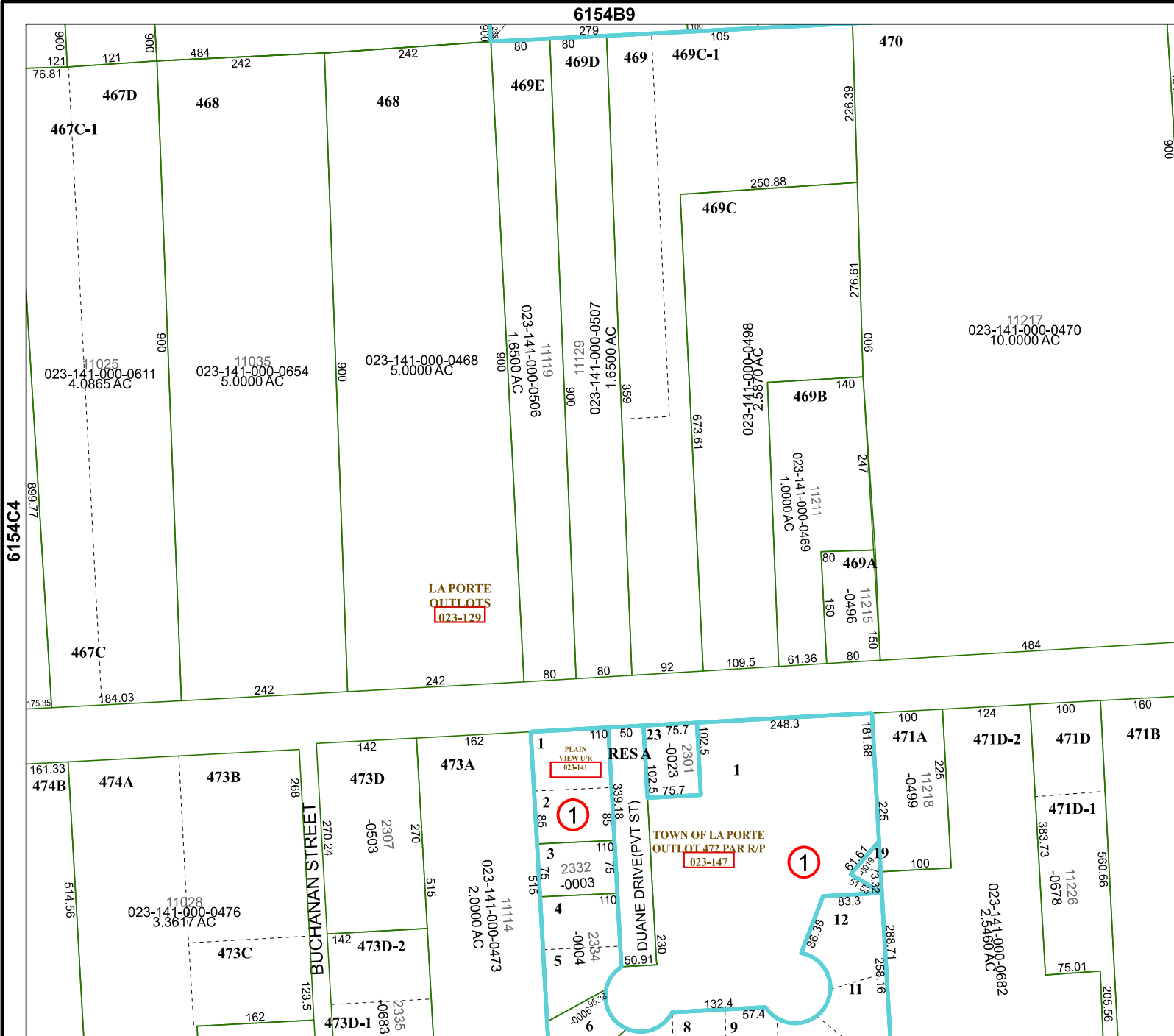
MAP LOCATION



## FACET 6154D1

11	12	9	10	11
3	4	1	2	3
7	8	5	6	7

6154D5



LA PORTE OUTLOTS 023-129

6154C4

6154D2