

6155A10

Harris Central Appraisal District



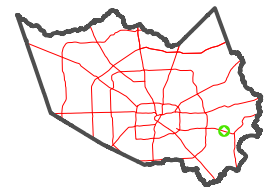
0 45 90 180 Feet

PUBLICATION DATE:
12/30/2023

Geospatial or map data maintained by the Harris Central Appraisal District is for informational purposes and may not have been prepared for or be suitable for legal, engineering, or surveying purposes. It does not represent an on-the-ground survey and only represents the approximate location of property boundaries.

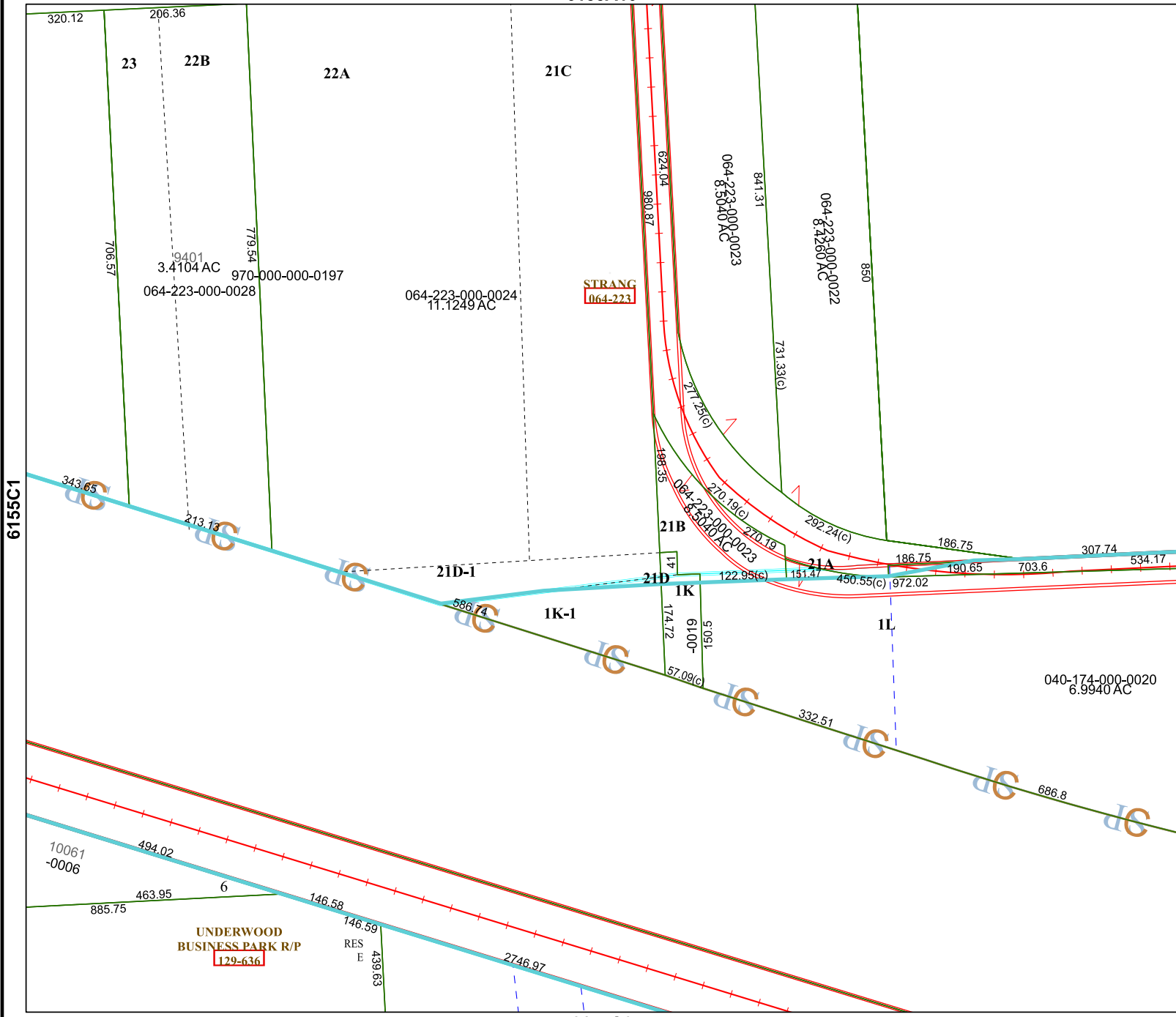


MAP LOCATION



FACET 6155C2

12	9	10	11	12
4	1	2	3	4
8	5	6	7	8



6155C1

6155C3

6155C6

UNDERWOOD
BUSINESS PARK R/P
129-636

RES
E

STRANG
064-223

040-174-000-0020
6.9940 AC

9401
3.4104 AC
064-223-000-0028

064-223-000-0024
11.1249 AC

064-223-000-0023
8.5040 AC

064-223-000-0022
8.4280 AC

064-223-000-0023
8.5040 AC

320.12

23

22B

22A

21C

21B

21A

21D-1

21D

1K-1

1K

1L

10061-0006

6

UNDERWOOD
BUSINESS PARK R/P
129-636

RES
E

6155C6

12 9 10 11 12

4 1 2 3 4

8 5 6 7 8