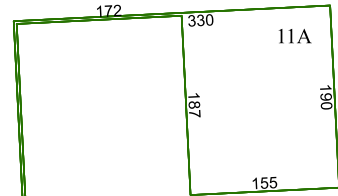


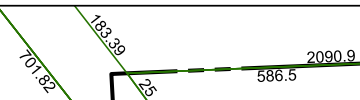
6156C7

6156C10

6155A3



1515
120.2568 AC



2643.88

Harris Central Appraisal District



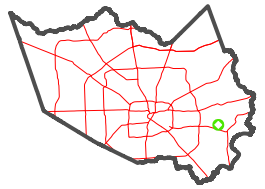
0 45 90 180 Feet

PUBLICATION DATE:
1/4/2023

Geospatial or map data maintained by the Harris Central Appraisal District is for informational purposes and may **not** have been prepared for or be suitable for legal, engineering, or surveying purposes. It does **not** represent an on-the-ground survey and only represents the approximate location of property boundaries.



MAP LOCATION



FACET 6156C11

5	6	7	8	5
9	10	11	12	9
1	2	3	4	1

1

1A

6156C12