

6156D1

041-002-004-0104
83.2120 AC

6156C8

Harris Central Appraisal District



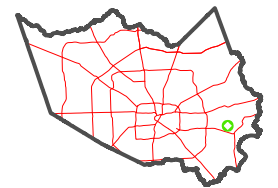
0 45 90 180
Feet

PUBLICATION DATE:
1/4/2023

Geospatial or map data maintained by the Harris Central Appraisal District is for informational purposes and may not have been prepared for or be suitable for legal, engineering, or surveying purposes. It does not represent an on-the-ground survey and only represents the approximate location of property boundaries.

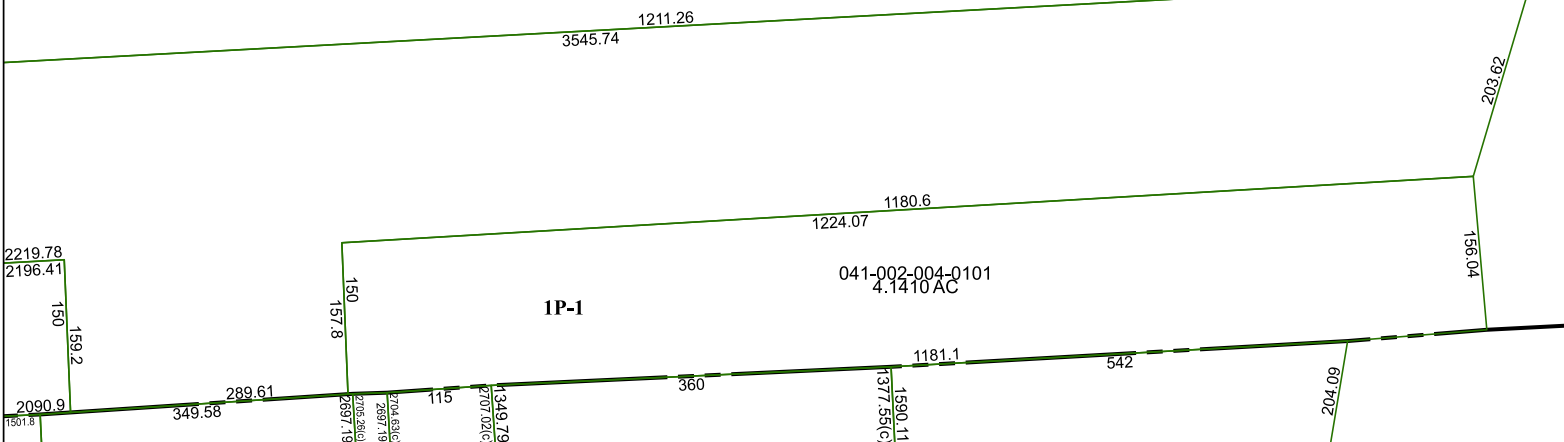


MAP LOCATION



FACET 6156D5

3	4	1	2	3
7	8	5	6	7
11	12	9	10	11



6156D9

6156D6