

6158D12

12A

12A

Harris Central Appraisal District

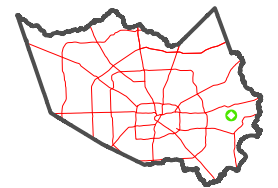


0 45 90 180 Feet

PUBLICATION DATE:
1/10/2023

Geospatial or map data maintained by the Harris Central Appraisal District is for informational purposes and may not have been prepared for or be suitable for legal, engineering, or surveying purposes. It does not represent an on-the-ground survey and only represents the approximate location of property boundaries.

MAP LOCATION



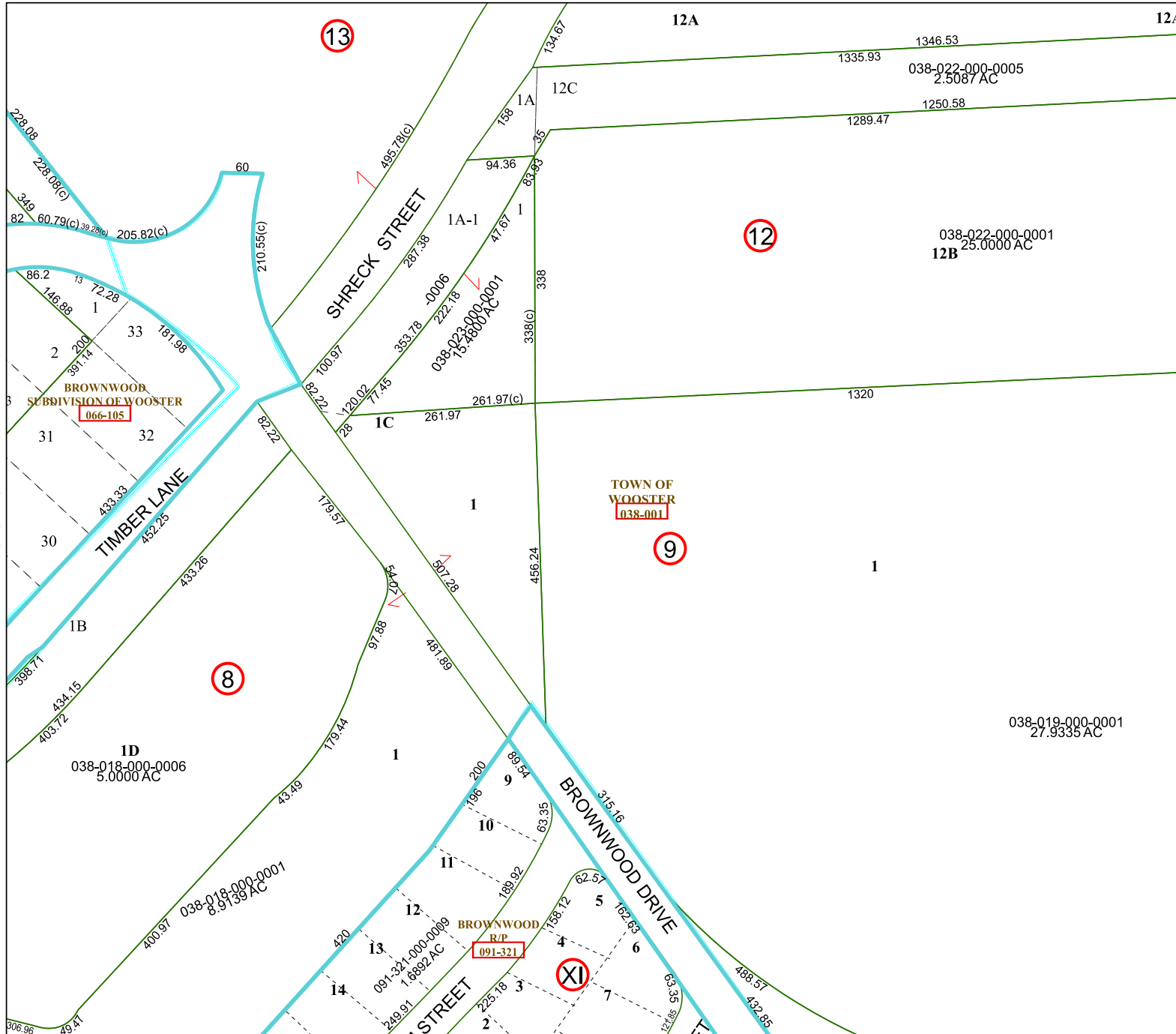
FACET 6157B4

10	11	12	9	10
2	3	4	1	2
6	7	8	5	6

6157B8

6157B3

6257A1



13

12

9

8

XI

