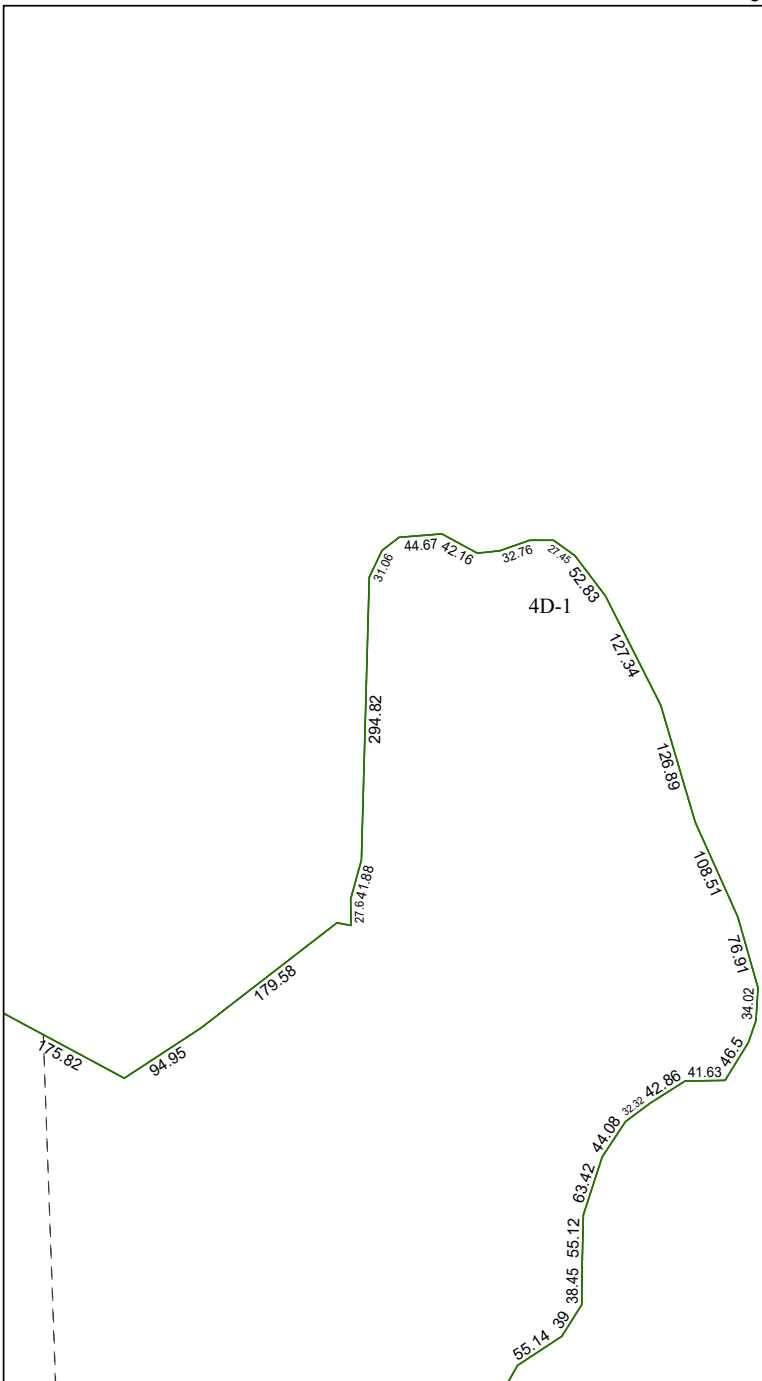


6159A7

6159A10



4D-1

042-235-000-0085
136.1420 AC

6159C3

Harris Central Appraisal District



0 50 100 200 Feet

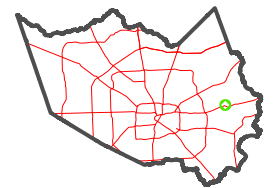
PUBLICATION DATE:
12/18/2025

Geospatial or map data maintained by the Harris Central Appraisal District is for informational purposes and may **not** have been prepared for or be suitable for legal, engineering, or surveying purposes. It does **not** represent an on-the-ground survey and only represents the approximate location of property boundaries.



6159A12

MAP LOCATION



FACET 6159A11

5	6	7	8	5
9	10	11	12	9
1	2	3	4	1