

6161C1

# Harris Central Appraisal District



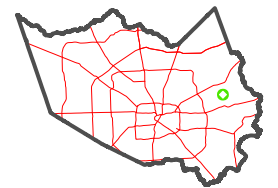
0 45 90 180  
Feet

PUBLICATION DATE:  
1/4/2023

Geospatial or map data maintained by the Harris Central Appraisal District is for informational purposes and may **not** have been prepared for or be suitable for legal, engineering, or surveying purposes. It does **not** represent an on-the-ground survey and only represents the approximate location of property boundaries.



## MAP LOCATION



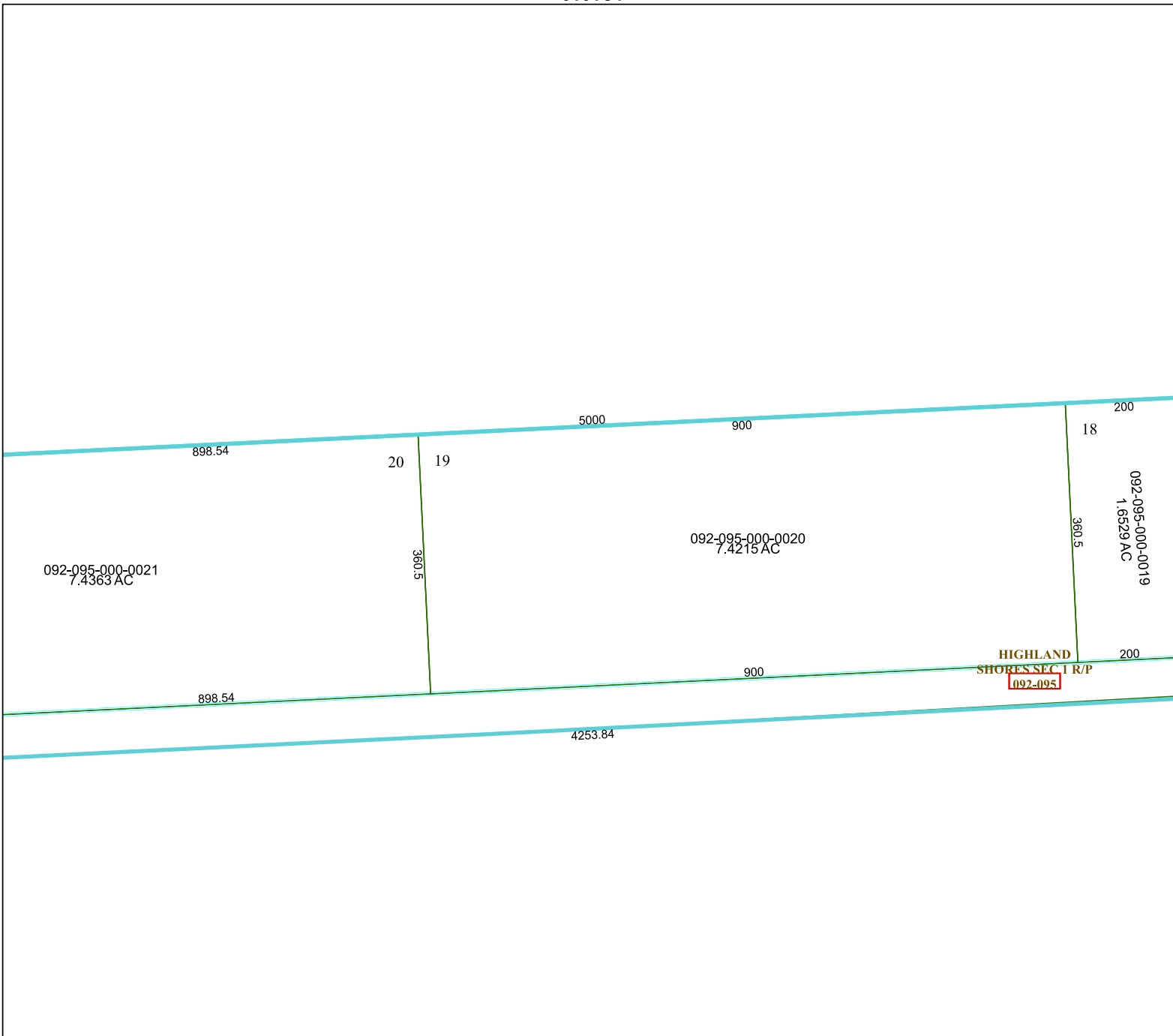
## FACET 6161C5

3	4	1	2	3
7	8	5	6	7
11	12	9	10	11

6161C9

6061D8

6161C6



092-095-000-0021  
7.4363 AC

092-095-000-0020  
7.4215 AC

092-095-000-0019  
1.6529 AC

HIGHLAND  
SHORES SEC 1 R/P  
092-095