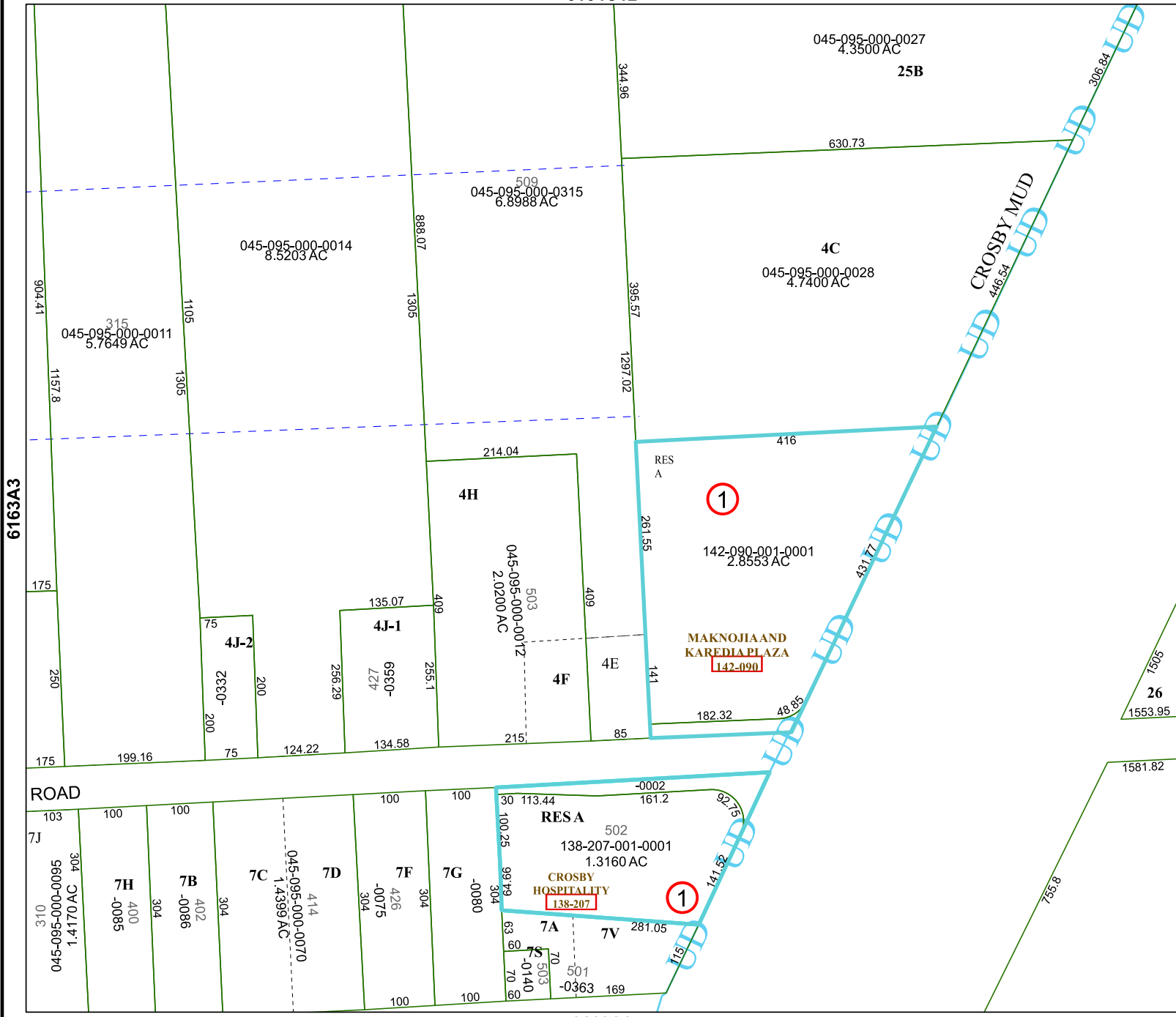


6164C12



6163A8

# Harris Central Appraisal District



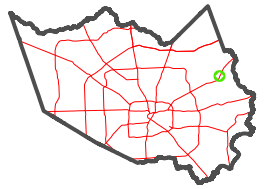
0 45 90 180 Feet

PUBLICATION DATE: 12/30/2023

Geospatial or map data maintained by the Harris Central Appraisal District is for informational purposes and may not have been prepared for or be suitable for legal, engineering, or surveying purposes. It does not represent an on-the-ground survey and only represents the approximate location of property boundaries.



## MAP LOCATION



# FACET 6163A4

10	11	12	9	10
2	3	4	1	2
6	7	8	5	6

6163A3

6163B1

1505  
26  
1553.95

1581.82

8.592

ROAD