

Harris Central Appraisal District

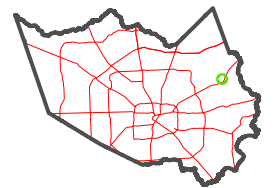


0 45 90 180 Feet

PUBLICATION DATE:
2/13/2024

Geospatial or map data maintained by the Harris Central Appraisal District is for informational purposes and may not have been prepared for or be suitable for legal, engineering, or surveying purposes. It does not represent an on-the-ground survey and only represents the approximate location of property boundaries.

MAP LOCATION



FACET 6163A6

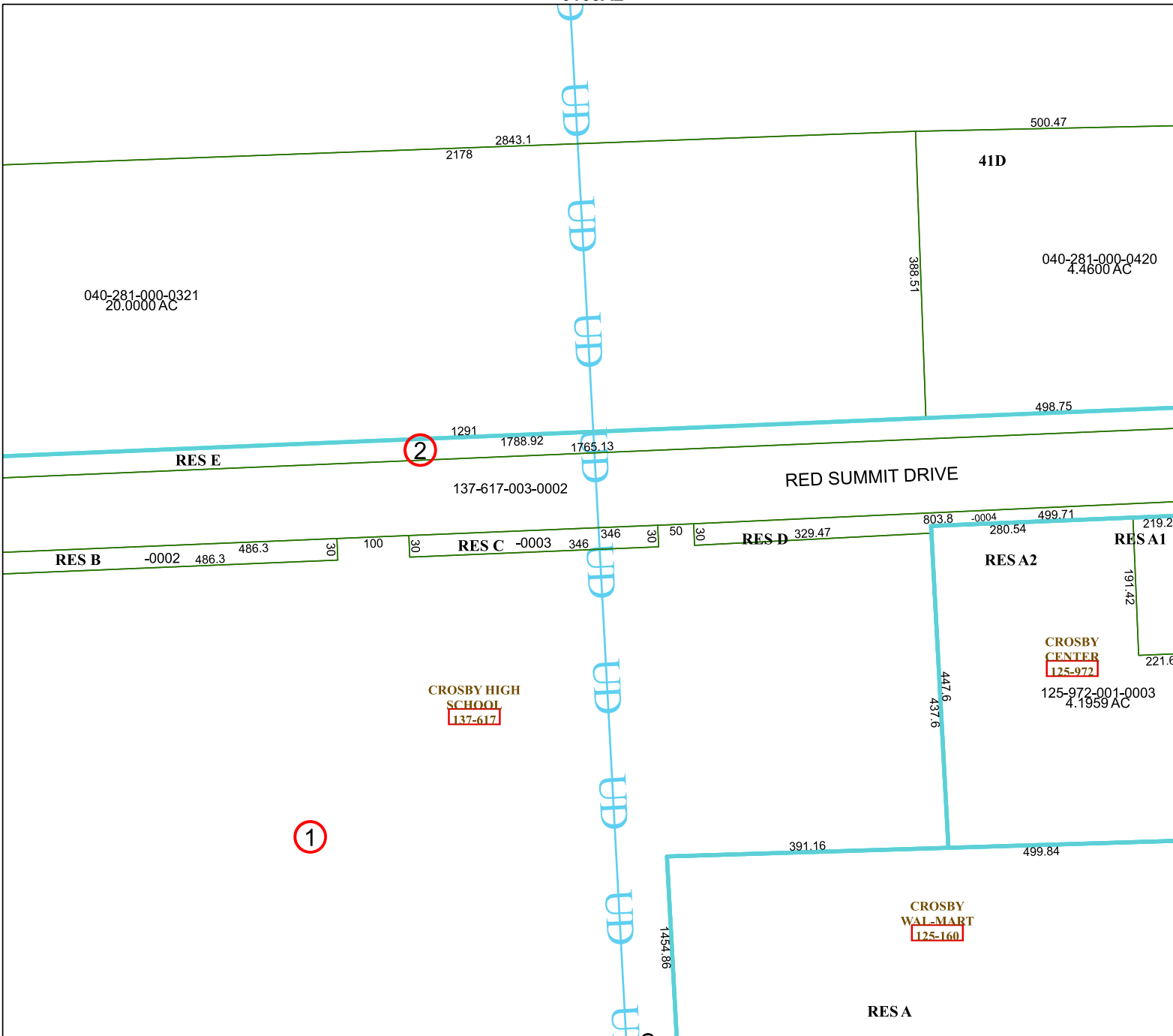
4	1	2	3	4
8	5	6	7	8
12	9	10	11	12

6163A2

6163A10

6163A5

6163A7



040-281-000-0321
20.0000 AC

41D

040-281-000-0420
4.4600 AC

RES E

RED SUMMIT DRIVE

137-617-003-0002

RES B

RES C

RES D

RES A2

RES A1

CROSBY HIGH SCHOOL
137-617

CROSBY CENTER
125-972

125-972-001-0003
4.1959 AC

CROSBY WAL-MART
125-160

RES A

1

2