

6164D11

14914  
045-109-000-0038

# Harris Central Appraisal District



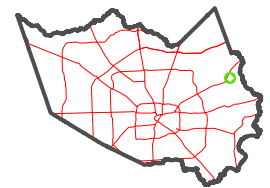
0 45 90 180  
Feet

PUBLICATION DATE:  
3/11/2024

Geospatial or map data maintained by the Harris Central Appraisal District is for informational purposes and may not have been prepared for or be suitable for legal, engineering, or surveying purposes. It does not represent an on-the-ground survey and only represents the approximate location of property boundaries.

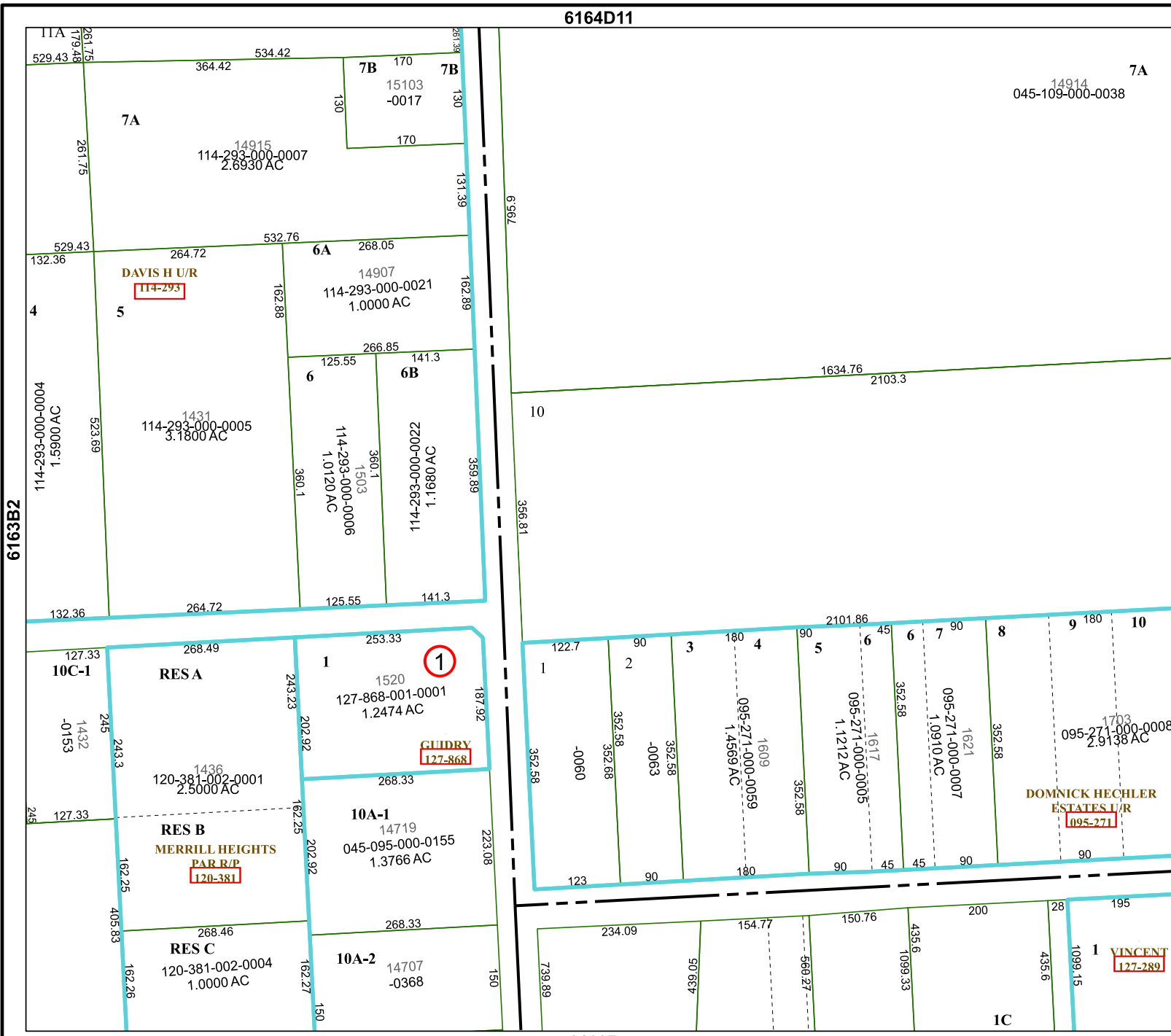


MAP LOCATION



## FACET 6163B3

9	10	11	12	9
1	2	3	4	1
5	6	7	8	5



6163B2

6163B4

6163B7