

6164D6

2K 2L

043-184-000-0049
35.6270 AC

6164D9

Harris Central Appraisal District



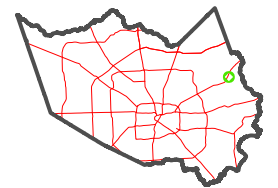
0 45 90 180
Feet

PUBLICATION DATE:
12/30/2023

Geospatial or map data maintained by the Harris Central Appraisal District is for informational purposes and may not have been prepared for or be suitable for legal, engineering, or surveying purposes. It does not represent an on-the-ground survey and only represents the approximate location of property boundaries.

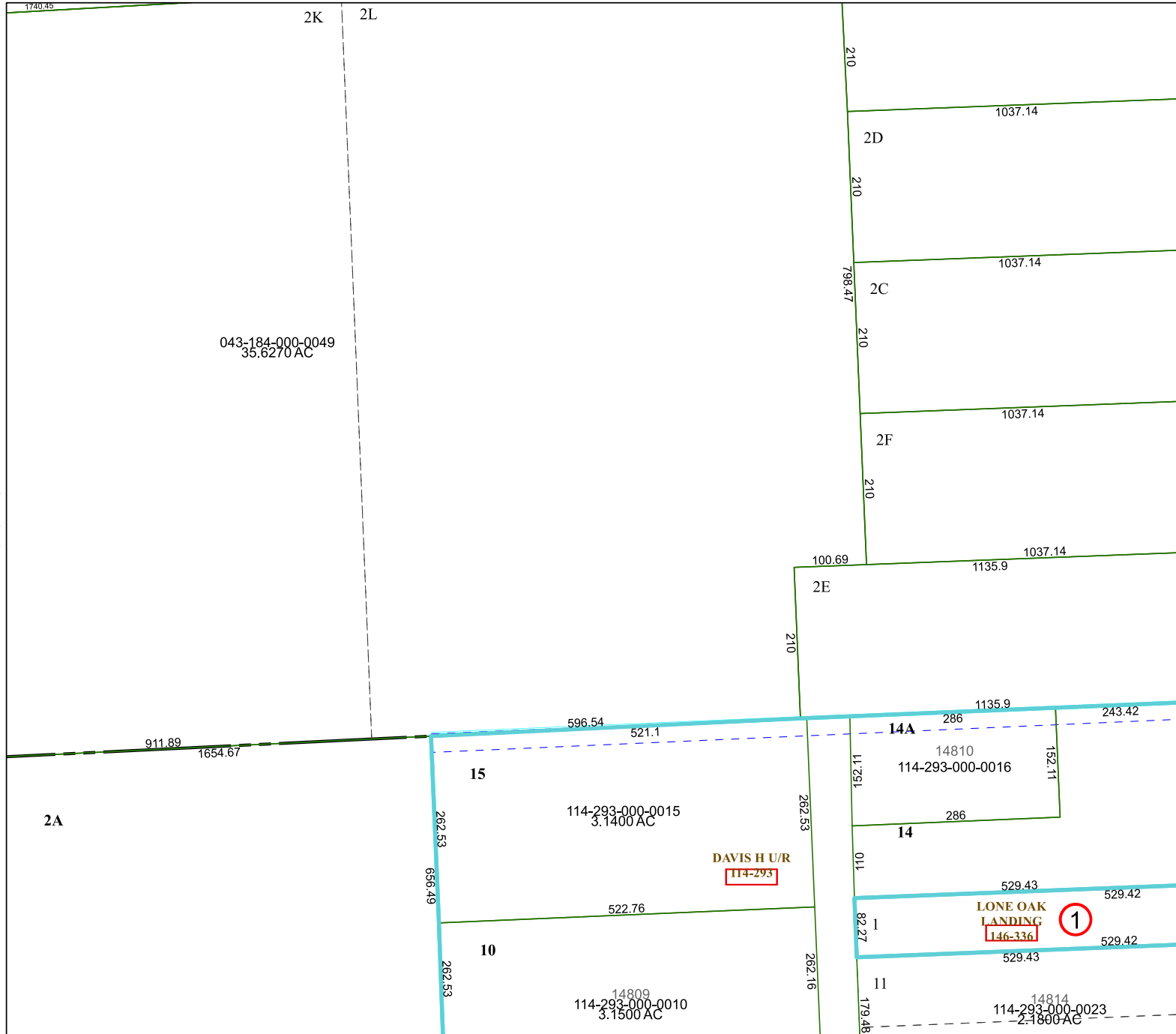


MAP LOCATION



FACET 6164D10

8	5	6	7	8
12	9	10	11	12
4	1	2	3	4



6163B2

6164D11