

6166D10

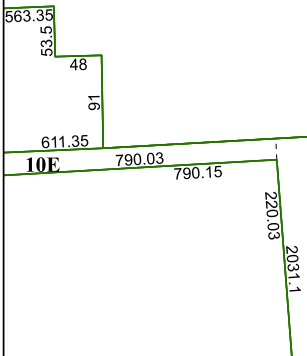
2B

18426
044-063-000-0015
57.9800 AC
044-063-000-0170
1.0000 AC
18426
58.9800 AC

10A

1498

6165B1



1091.28 1250.65

1A-4

718.4

198.45
239.8

2772.73

2061

6165B6

Harris Central Appraisal District



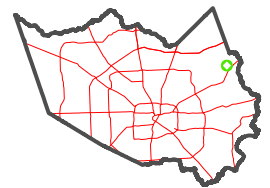
0 45 90 180 Feet

PUBLICATION DATE:
1/4/2023

Geospatial or map data maintained by the Harris Central Appraisal District is for informational purposes and may **not** have been prepared for or be suitable for legal, engineering, or surveying purposes. It does **not** represent an on-the-ground survey and only represents the approximate location of property boundaries.



MAP LOCATION



FACET 6165B2

12	9	10	11	12
4	1	2	3	4
8	5	6	7	8