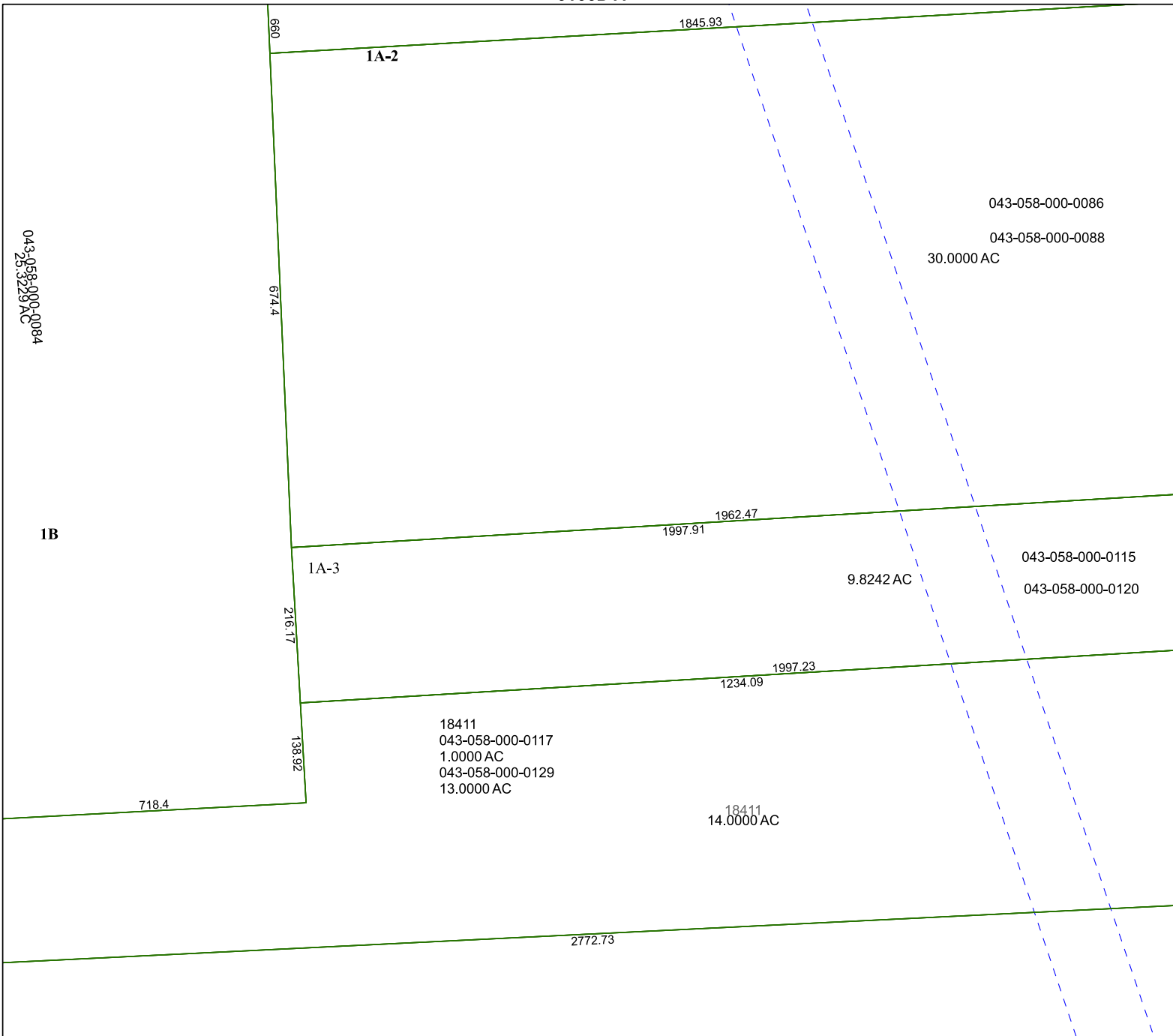


6166D11



# Harris Central Appraisal District



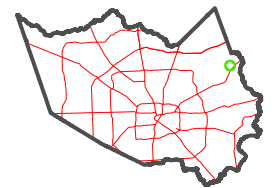
0 45 90 180 Feet

PUBLICATION DATE:  
1/4/2023

Geospatial or map data maintained by the Harris Central Appraisal District is for informational purposes and may **not** have been prepared for or be suitable for legal, engineering, or surveying purposes. It does **not** represent an on-the-ground survey and only represents the approximate location of property boundaries.



## MAP LOCATION



# FACET

## 6165B3

9	10	11	12	9
1	2	3	4	1
5	6	7	8	5

6165B7

043-058-000-0084  
25.3229 AC

6165B2

1B

660

1A-2

1845.93

043-058-000-0086

043-058-000-0088

30.0000 AC

674.4

216.17

1A-3

1997.91

1962.47

9.8242 AC

043-058-000-0115

043-058-000-0120

6165B4

1997.23

1234.09

18411  
043-058-000-0117  
1.0000 AC  
043-058-000-0129  
13.0000 AC

718.4

18411  
14.0000 AC

2772.73