

6166D12

2C-2

1514.5

2C

18404
045-168-000-0030
1.0000 AC
045-168-000-0027
18.0000 AC

18404
19.0000 AC

2C-1

2E

2J
045-168-000-0085
5.9800 AC

2H

2

2F

2G

6165B3

6295A

6165B8

Harris Central Appraisal District



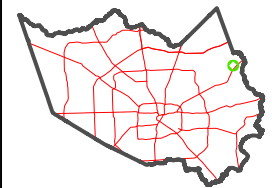
0 45 90 180 Feet

PUBLICATION DATE:
1/4/2023

Geospatial or map data maintained by the Harris Central Appraisal District is for informational purposes and may not have been prepared for or be suitable for legal, engineering, or surveying purposes. It does not represent an on-the-ground survey and only represents the approximate location of property boundaries.

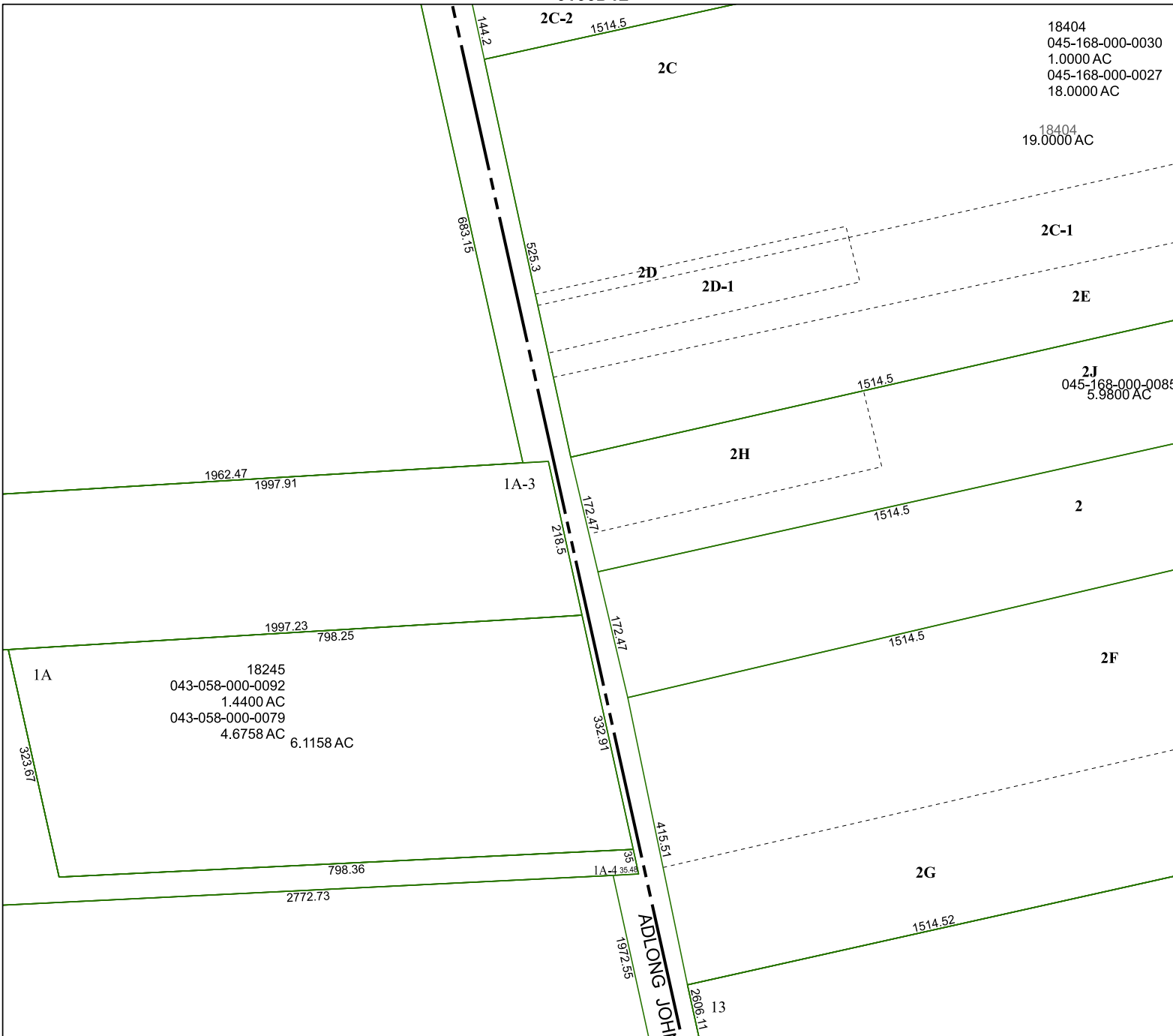


MAP LOCATION



FACET 6165B4

10	11	12	9	10
2	3	4	1	2
6	7	8	5	6



ADLONG JOHN