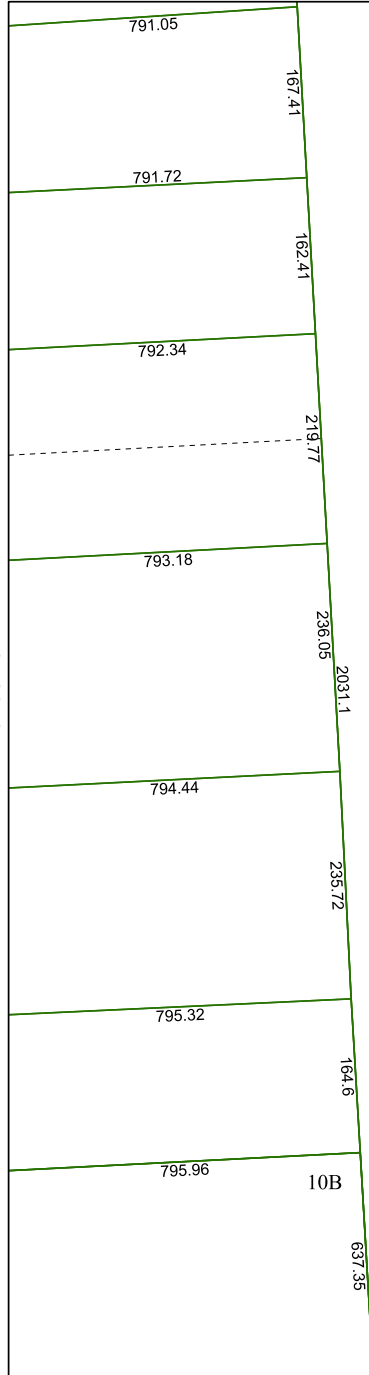


6165B2

6165B5



10C
 044-063-000-0061
 50.0000 AC
 044-063-000-0189
 0.5400 AC
 18424
 50.5400 AC

239.8
2061

6165B10

Harris Central Appraisal District



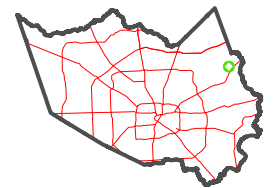
0 45 90 180 Feet

PUBLICATION DATE:
1/4/2023

Geospatial or map data maintained by the Harris Central Appraisal District is for informational purposes and may **not** have been prepared for or be suitable for legal, engineering, or surveying purposes. It does **not** represent an on-the-ground survey and only represents the approximate location of property boundaries.



MAP LOCATION



FACET 6165B6

4	1	2	3	4
8	5	6	7	8
12	9	10	11	12

6165B7