

6165A10

043-183-000-0166
(pure)

5

Harris Central Appraisal District



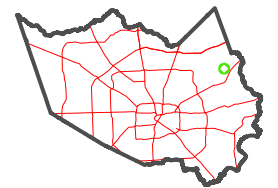
0 45 90 180
Feet

PUBLICATION DATE:
4/3/2023

Geospatial or map data maintained by the Harris Central Appraisal District is for informational purposes and may not have been prepared for or be suitable for legal, engineering, or surveying purposes. It does not represent an on-the-ground survey and only represents the approximate location of property boundaries.



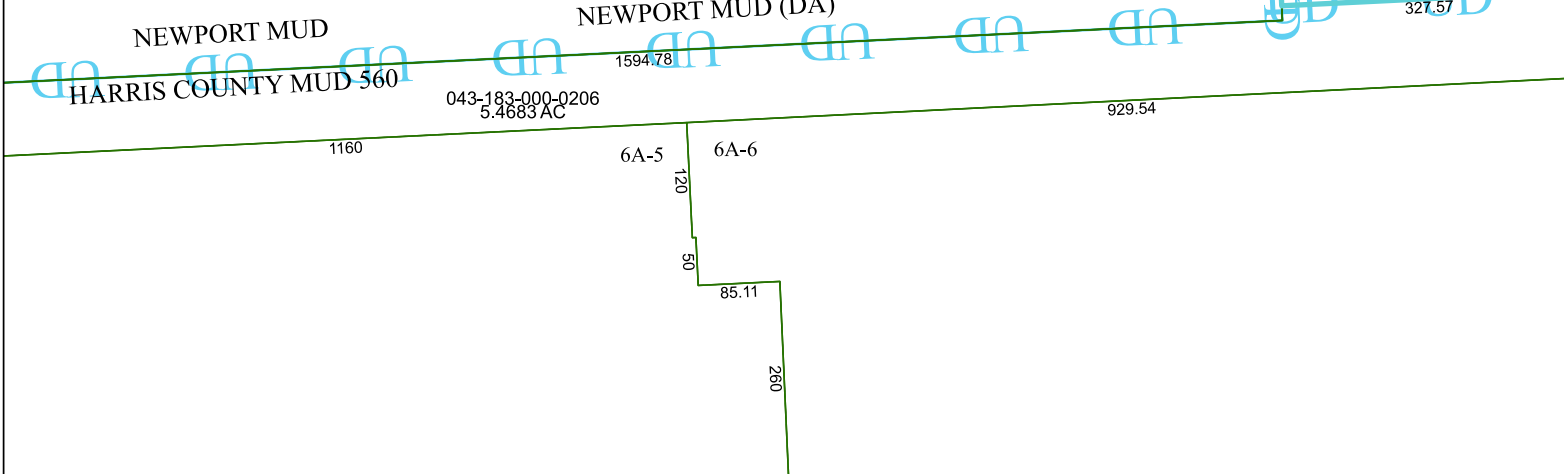
MAP LOCATION



FACET 6165C2

12	9	10	11	12
4	1	2	3	4
8	5	6	7	8

6165C1



6165C6