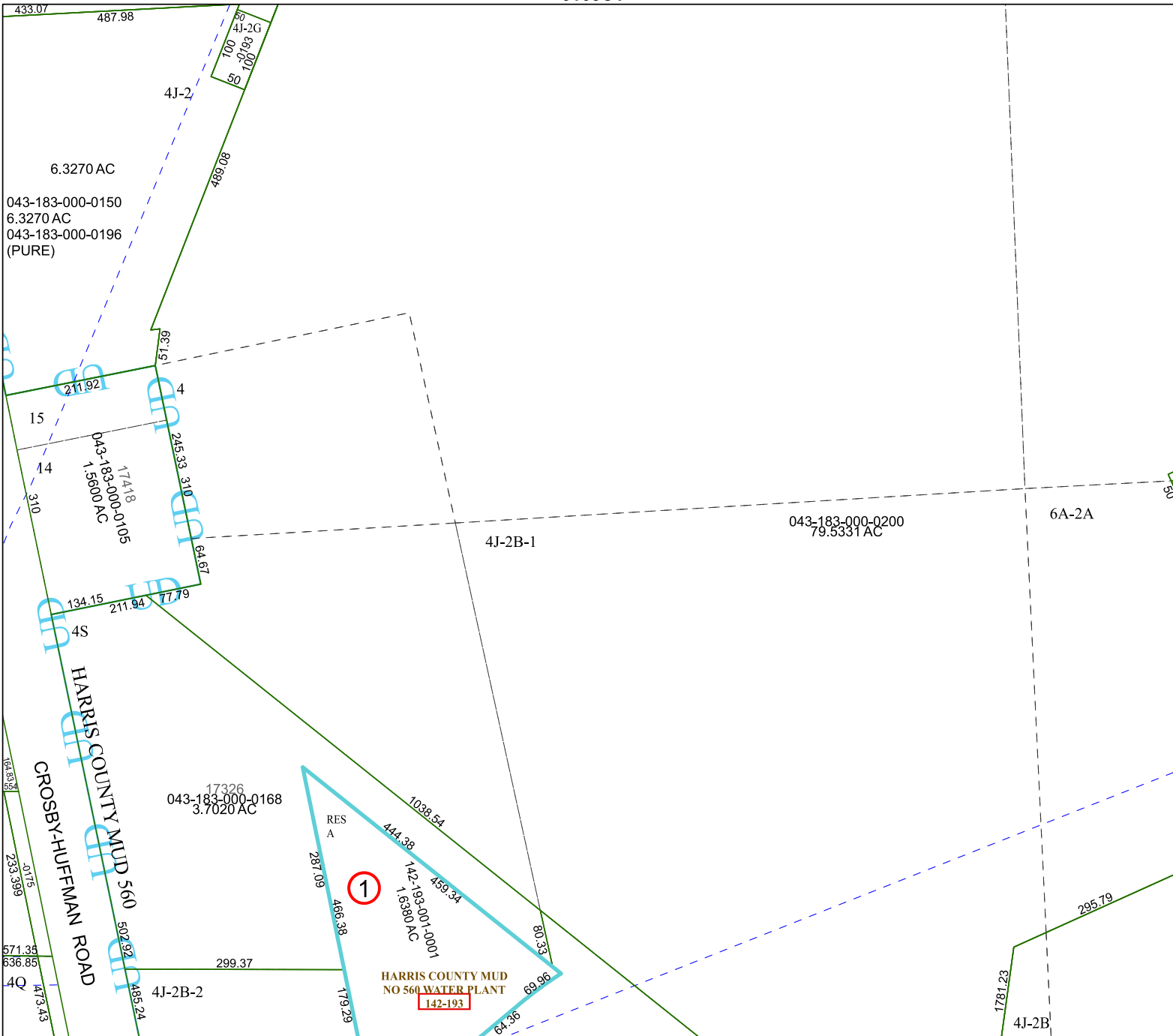


6165C1



6165C9

Harris Central Appraisal District



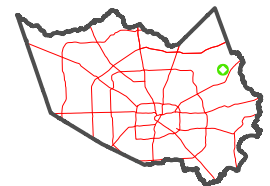
0 45 90 180 Feet

PUBLICATION DATE:
2/13/2024

Geospatial or map data maintained by the Harris Central Appraisal District is for informational purposes and may not have been prepared for or be suitable for legal, engineering, or surveying purposes. It does not represent an on-the-ground survey and only represents the approximate location of property boundaries.



MAP LOCATION



FACET 6165C5

3	4	1	2	3
7	8	5	6	7
11	12	9	10	11

6065D8

6165C6

1781.23

4J-2B

295.79

6.3270 AC

043-183-000-0150
6.3270 AC
043-183-000-0196
(PURE)

HARRIS COUNTY MUD 560
CROSBY-HUFFMAN ROAD

HARRIS COUNTY MUD
NO 560 WATER PLANT
142-193

RES
A

1

433.07 487.98

4J-2

80.09

489.09

86.19

211.92

4

245.33

310

64.67

4S

134.15

211.94

77.79

4S

173.26

043-183-000-0168

3.7020 AC

4J-2B-2

299.37

485.24

80

4J-2G

100

0193

100

50

17418

043-183-000-0105

1.5600 AC

15

14

310

1038.54

444.38

459.34

142-183-001-0001

1.6380 AC

80.33

69.96

64.36

69.96

179.29

4J-2B-1

1038.54

459.34

80.33

433.07

487.98

80.09

489.09

86.19

211.92

4

245.33

310

64.67

4S

134.15

211.94

77.79

4S

173.26

043-183-000-0168

3.7020 AC

4J-2B-2

299.37

485.24

80

4J-2G

100

0193

100

50

17418

043-183-000-0105

1.5600 AC

15

14

310

1038.54

444.38

459.34

142-183-001-0001

1.6380 AC

80.33

69.96

64.36

69.96

179.29

4J-2B-1

1038.54

459.34

80.33

69.96

64.36

179.29

4J-2B-2

299.37

485.24

80

4J-2G

100

0193

100

50

17418

043-183-000-0105

1.5600 AC

15

14

310

1038.54

444.38

459.34

142-183-001-0001

1.6380 AC

80.33

69.96

64.36

69.96

179.29

4J-2B-1

1038.54

459.34

80.33

69.96

64.36

69.96

179.29

4J-2B-2

299.37

485.24

80

4J-2G

100

0193

100

50

17418

043-183-000-0105

1.5600 AC

15

14

310

1038.54

444.38

459.34

142-183-001-0001

1.6380 AC

80.33

69.96

64.36

69.96

179.29

4J-2B-1

1038.54

459.34

80.33

69.96

64.36

69.96

179.29

4J-2B-2

299.37

485.24

80

4J-2G

100

0193

100

50

17418

043-183-000-0105

1.5600 AC

15

14

310

1038.54

444.38

459.34

142-183-001-0001

1.6380 AC

80.33

69.96

64.36

69.96

179.29

4J-2B-1

1038.54

459.34

80.33

69.96

64.36

69.96

179.29

4J-2B-2

299.37

485.24

80

4J-2G

100

0193

100

50

17418

043-183-000-0105

1.5600 AC

15

14

310

1038.54

444.38

459.34

142-183-001-0001

1.6380 AC

80.33

69.96

64.36

69.96

179.29

4J-2B-1

1038.54

459.34

80.33

69.96

64.36

69.96

179.29

4J-2B-2

299.37

485.24

80

4J-2G

100

0193

100

50

17418

043-183-000-0105

1.5600 AC

15

14

310

1038.54

444.38

459.34

142-183-001-0001

1.6380 AC

80.33

69.96

64.36

69.96

179.29

4J-2B-1

1038.54

459.34

80.33

69.96

64.36

69.96

179.29