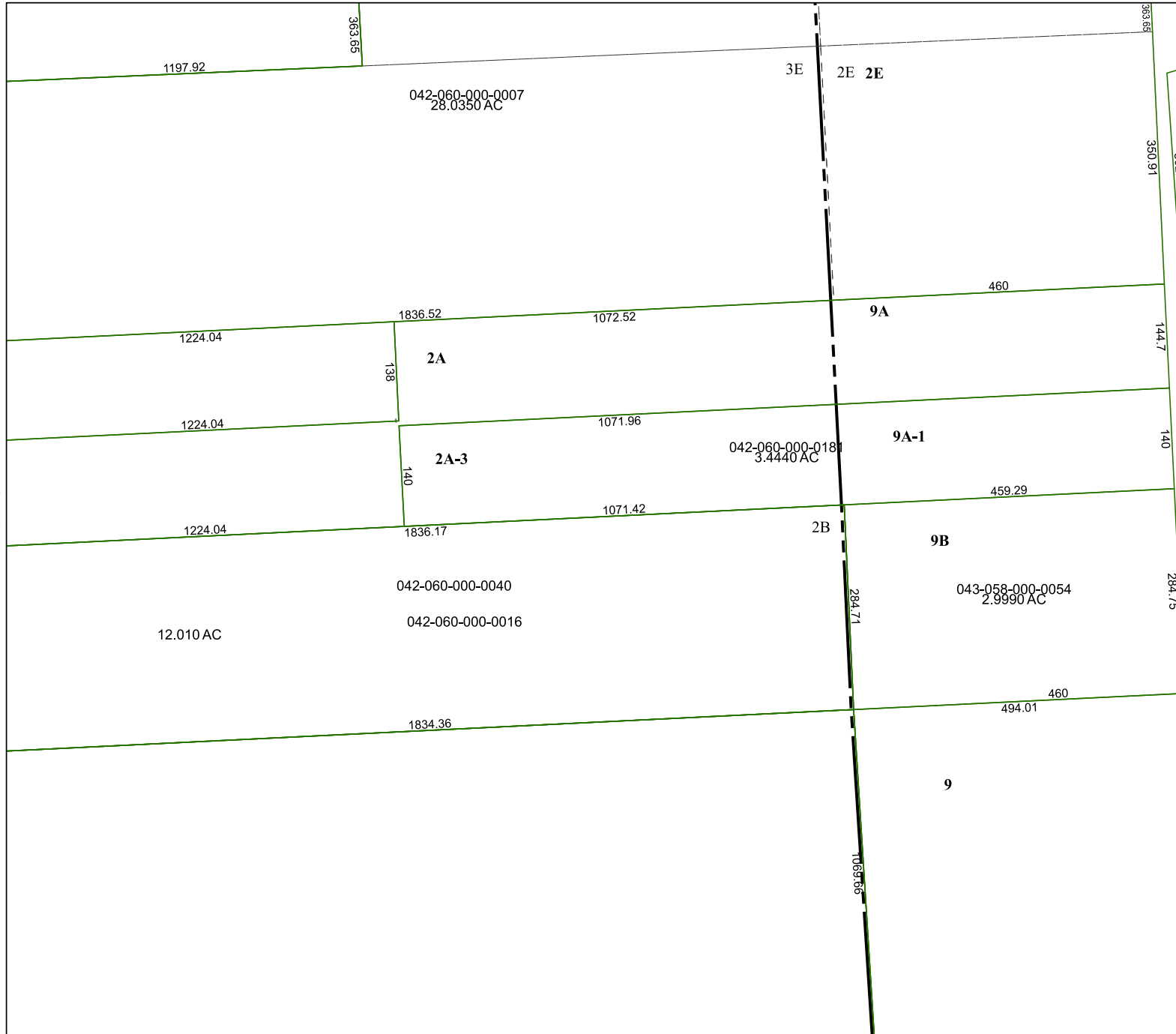


6166D2

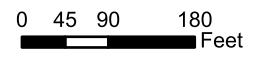
6166D5

6166D7

6166D10



# Harris Central Appraisal District

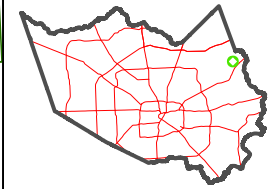


PUBLICATION DATE:  
1/22/2024

Geospatial or map data maintained by the Harris Central Appraisal District is for informational purposes and may **not** have been prepared for or be suitable for legal, engineering, or surveying purposes. It does **not** represent an on-the-ground survey and only represents the approximate location of property boundaries.



MAP LOCATION



## FACET 6166D6

4	1	2	3	4
8	5	6	7	8
12	9	10	11	12