

6168D10

042-159-000-0020  
206.8090 AC

6167B1

# Harris Central Appraisal District



0 45 90 180  
Feet

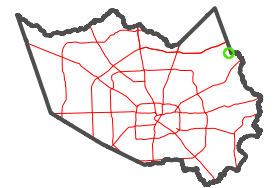
PUBLICATION DATE:  
1/4/2023

Geospatial or map data maintained by the Harris Central Appraisal District is for informational purposes and may **not** have been prepared for or be suitable for legal, engineering, or surveying purposes. It does **not** represent an on-the-ground survey and only represents the approximate location of property boundaries.



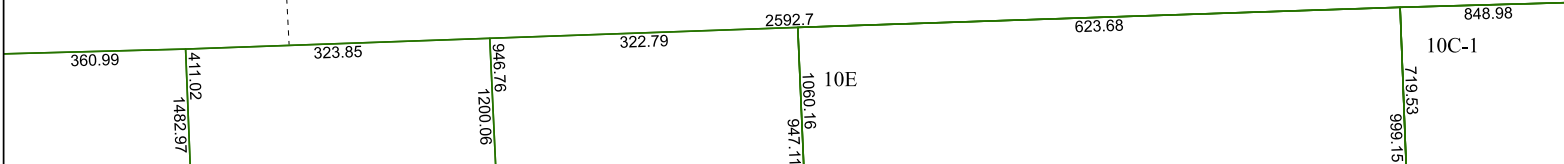
6167B3

## MAP LOCATION



## FACET 6167B2

12	9	10	11	12
4	1	2	3	4
8	5	6	7	8



6167B6