

6169A2

3407  
041-005-003-0048  
23.9500 AC

# Harris Central Appraisal District



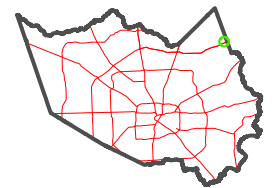
0 45 90 180  
Feet

PUBLICATION DATE:  
1/10/2023

Geospatial or map data maintained by the Harris Central Appraisal District is for informational purposes and may not have been prepared for or be suitable for legal, engineering, or surveying purposes. It does not represent an on-the-ground survey and only represents the approximate location of property boundaries.



## MAP LOCATION



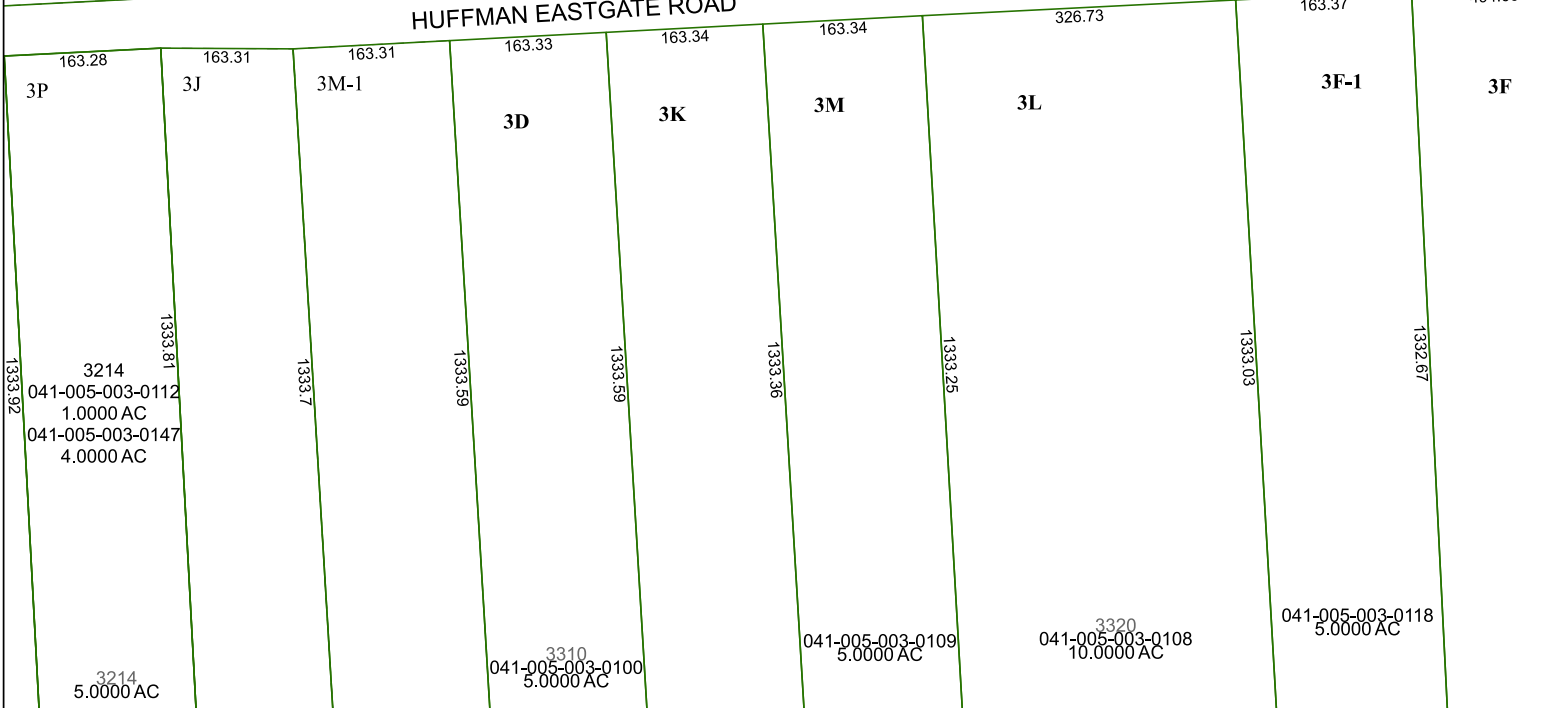
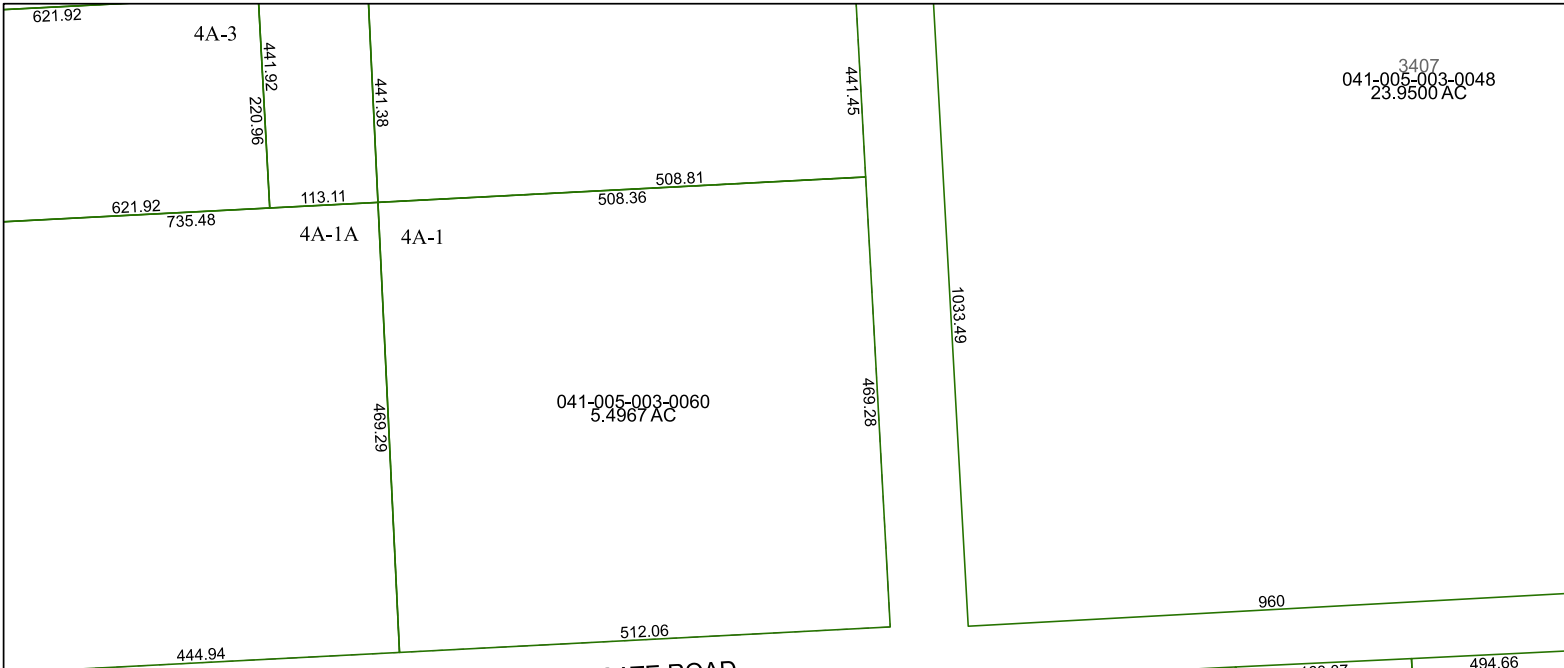
# FACET 6169A6

4	1	2	3	4
8	5	6	7	8
12	9	10	11	12

6169A10

6169A5

6169A7



6169A5

6169A7