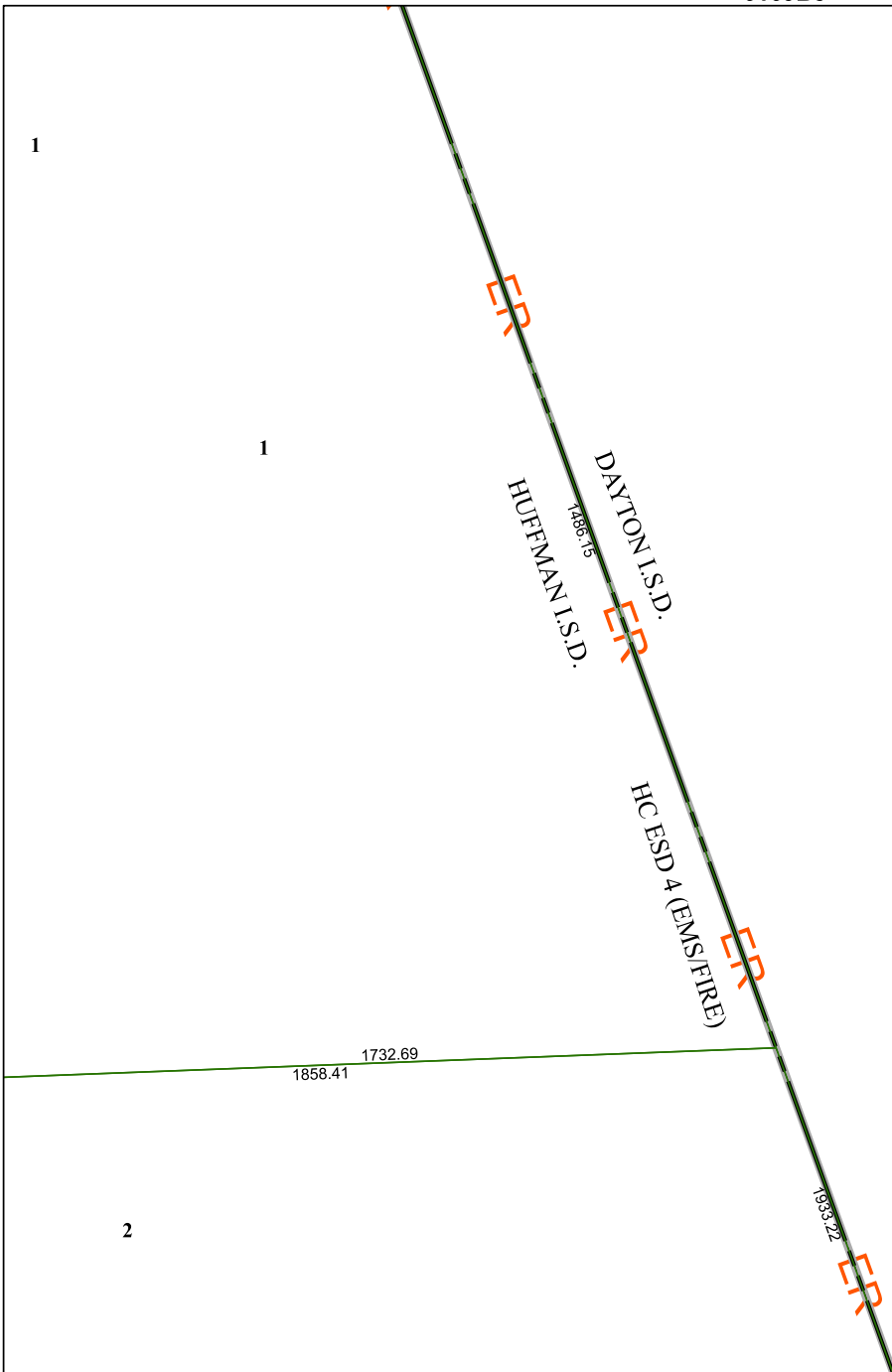


6169B5

6169A12



6169D1

# Harris Central Appraisal District



0 45 90 180  
Feet

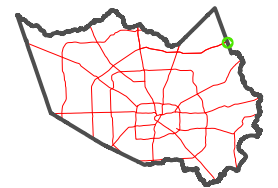
PUBLICATION DATE:  
1/4/2023

Geospatial or map data maintained by the Harris Central Appraisal District is for informational purposes and may **not** have been prepared for or be suitable for legal, engineering, or surveying purposes. It does **not** represent an on-the-ground survey and only represents the approximate location of property boundaries.



6169B10

## MAP LOCATION



## FACET 6169B9

7	8	5	6	7
11	12	9	10	11
3	4	1	2	3