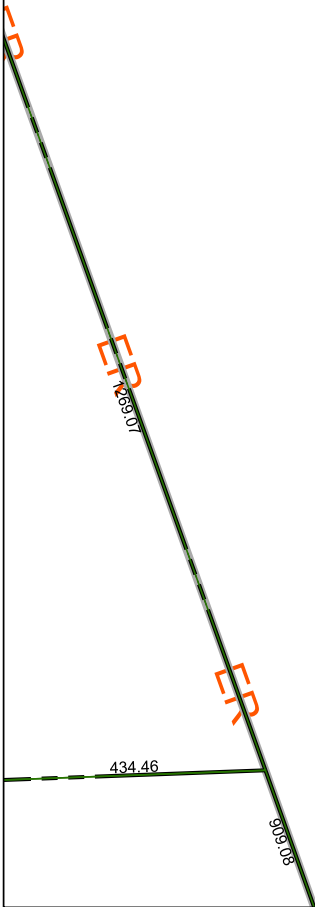


6169D2

6169D5



6169D10

# Harris Central Appraisal District



0 45 90 180 Feet

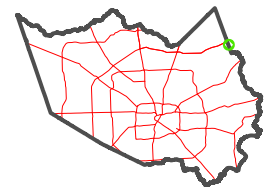
PUBLICATION DATE:  
1/4/2023

Geospatial or map data maintained by the Harris Central Appraisal District is for informational purposes and may **not** have been prepared for or be suitable for legal, engineering, or surveying purposes. It does **not** represent an on-the-ground survey and only represents the approximate location of property boundaries.



6169D7

## MAP LOCATION



## FACET 6169D6

4	1	2	3	4
8	5	6	7	8
12	9	10	11	12

A 3x5 grid of cells. The cell containing the number '6' is shaded with diagonal lines. An arrow points from the text 'FACET 6169D6' to this shaded cell.