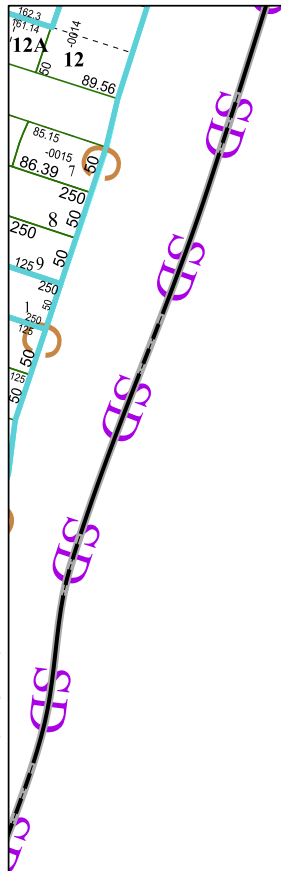


6249B7

6249B10



# Harris Central Appraisal District



0 45 90 180  
Feet

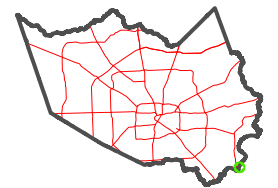
PUBLICATION DATE:  
4/22/2024

Geospatial or map data maintained by the Harris Central Appraisal District is for informational purposes and may **not** have been prepared for or be suitable for legal, engineering, or surveying purposes. It does **not** represent an on-the-ground survey and only represents the approximate location of property boundaries.



6249B12

## MAP LOCATION



## FACET 6249B11

5	6	7	8	
9	10	11	12	
1	2	3	4	

6249D3