

# Harris Central Appraisal District



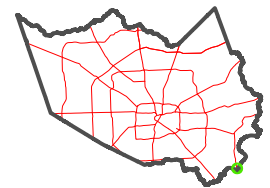
0 45 90 180 Feet

PUBLICATION DATE:  
12/30/2023

Geospatial or map data maintained by the Harris Central Appraisal District is for informational purposes and may not have been prepared for or be suitable for legal, engineering, or surveying purposes. It does not represent an on-the-ground survey and only represents the approximate location of property boundaries.



MAP LOCATION



## FACET 6249D1

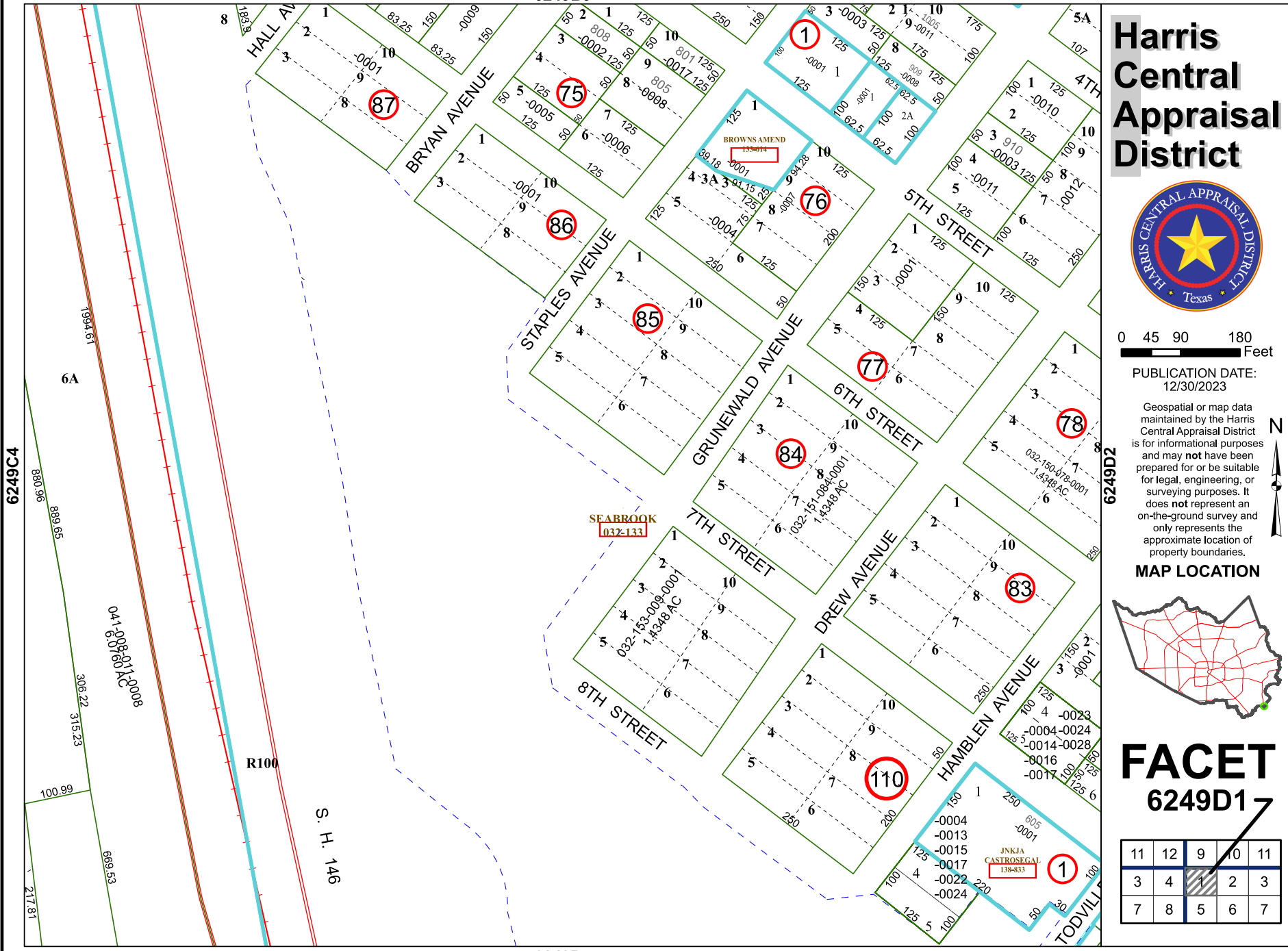
11	12	9	10	11
3	4	1	2	3
7	8	5	6	7

6249B9

6249D5

6249D2

6249C4



R100

S. H. 146

JNKJA CASTROSEGAL 138-833

SEABROOK 032-133

BROWNS AMEND 133-814