

Harris Central Appraisal District



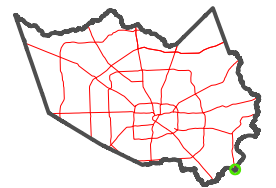
0 45 90 180 Feet

PUBLICATION DATE:
1/4/2023

Geospatial or map data maintained by the Harris Central Appraisal District is for informational purposes and may **not** have been prepared for or be suitable for legal, engineering, or surveying purposes. It does **not** represent an on-the-ground survey and only represents the approximate location of property boundaries.



MAP LOCATION



FACET 6249D5

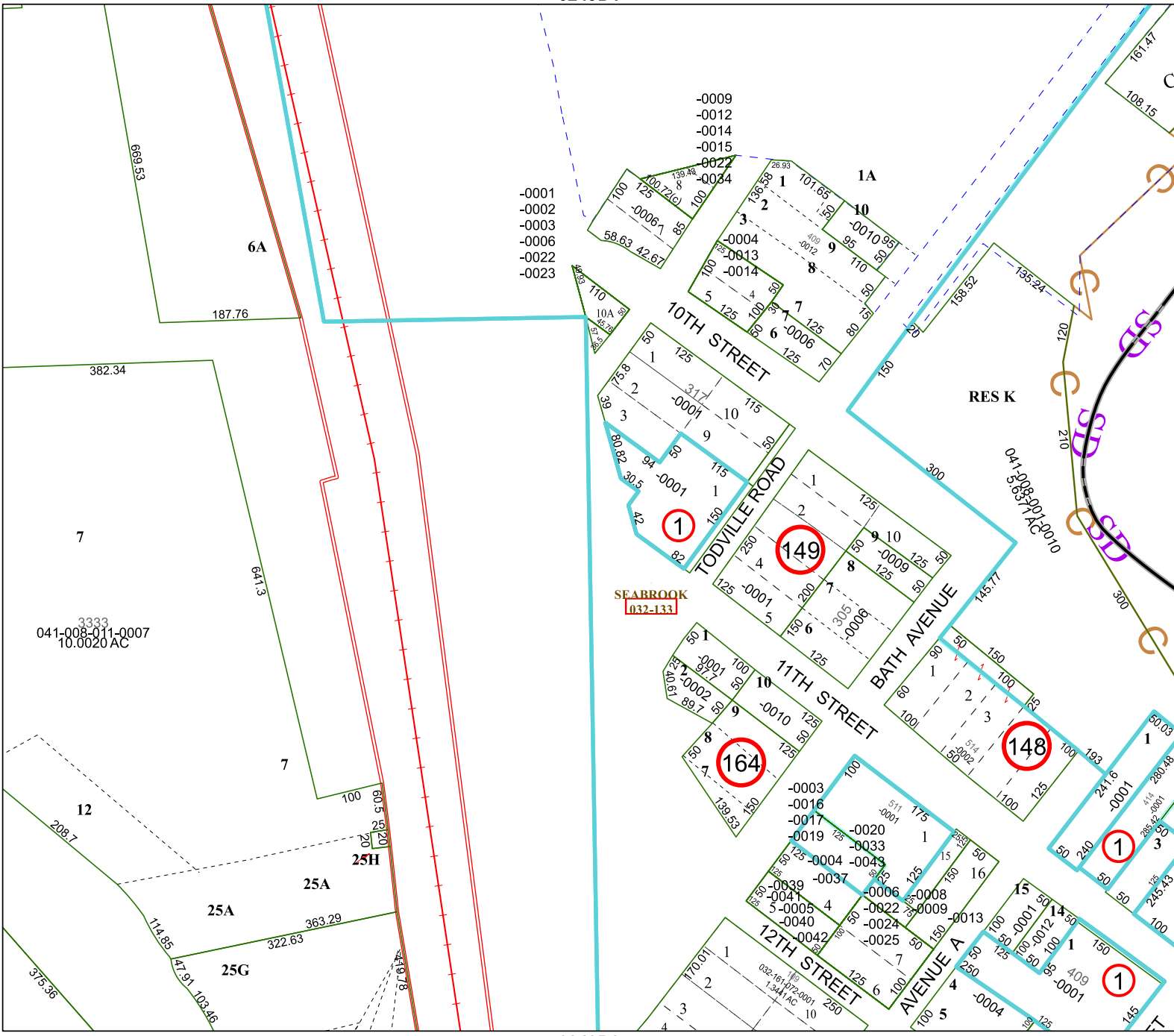
| | | | | |
|----|----|---|----|----|
| 3 | 4 | 1 | 2 | 3 |
| 7 | 8 | 5 | 6 | 7 |
| 11 | 12 | 9 | 10 | 11 |

6249D1

6249D9

6249C8

6249D6



-0001
-0002
-0003
-0006
-0022
-0023

-0009
-0012
-0014
-0015
-0027
-0044

3333
041-008-011-0007
10.0020 AC

SEA BROOK
032-133

RES K

041-008-001-0010
041-008-001-0010