

# Harris Central Appraisal District



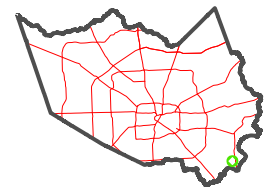
0 45 90 180 Feet

PUBLICATION DATE:  
1/4/2023

Geospatial or map data maintained by the Harris Central Appraisal District is for informational purposes and may not have been prepared for or be suitable for legal, engineering, or surveying purposes. It does not represent an on-the-ground survey and only represents the approximate location of property boundaries.

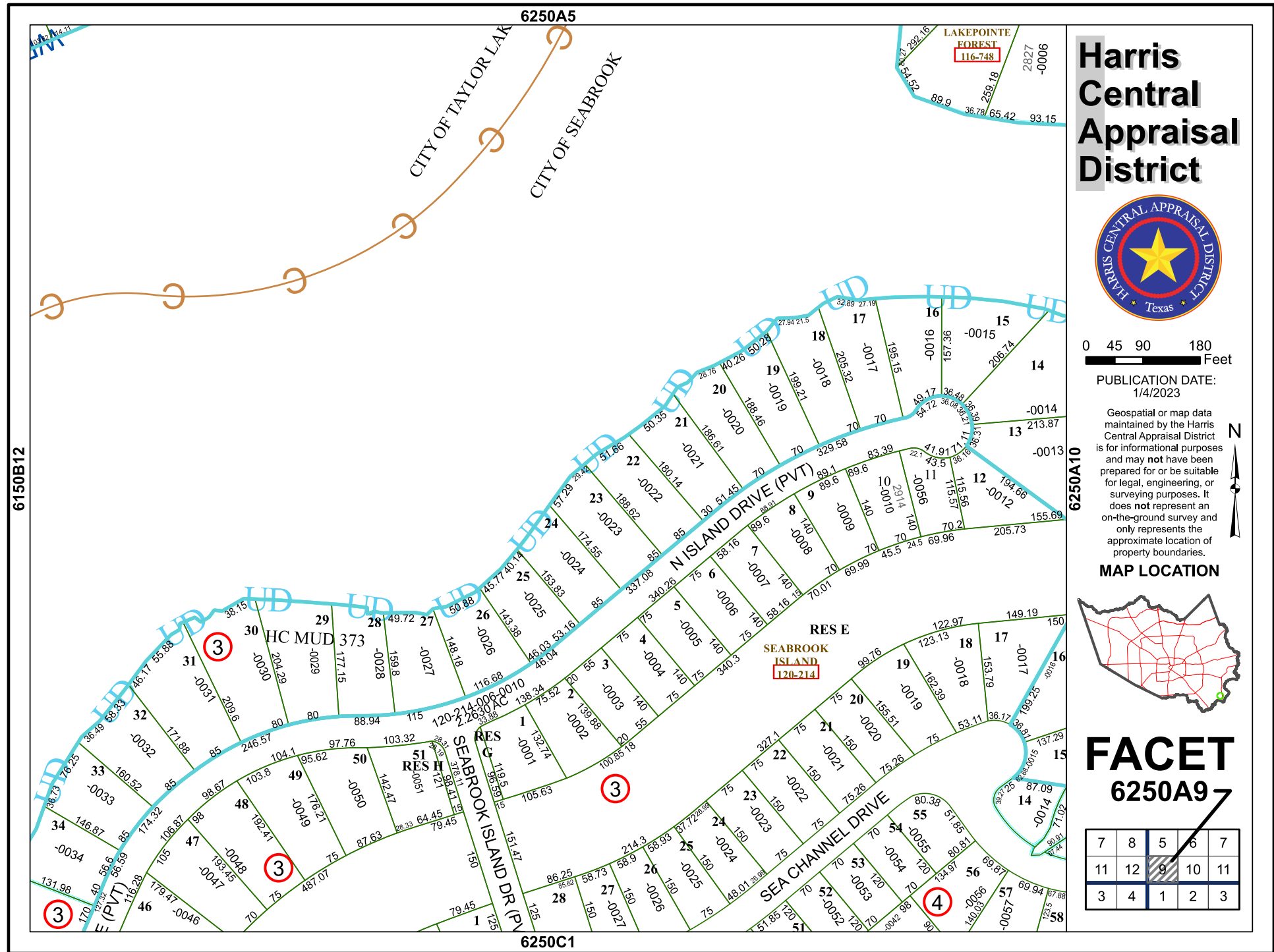


MAP LOCATION



## FACET 6250A9

7	8	5	6	7
11	12	9	10	11
3	4	1	2	3



6250A5

CITY OF TAYLOR LAK

CITY OF SEABROOK

LAKEPOINTE  
FOREST  
116-748

RES E  
SEABROOK  
ISLAND  
120-214

6250C1

6150B12

6250A10