

6250B5

RESA

133-369-001-0001
40.1940 AC

BAYVIEW
COMMERCIAL
133-369

Harris Central Appraisal District



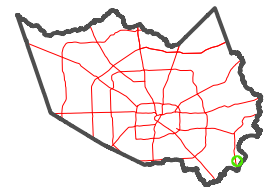
0 45 90 180
Feet

PUBLICATION DATE:
1/4/2023

Geospatial or map data maintained by the Harris Central Appraisal District is for informational purposes and may not have been prepared for or be suitable for legal, engineering, or surveying purposes. It does not represent an on-the-ground survey and only represents the approximate location of property boundaries.



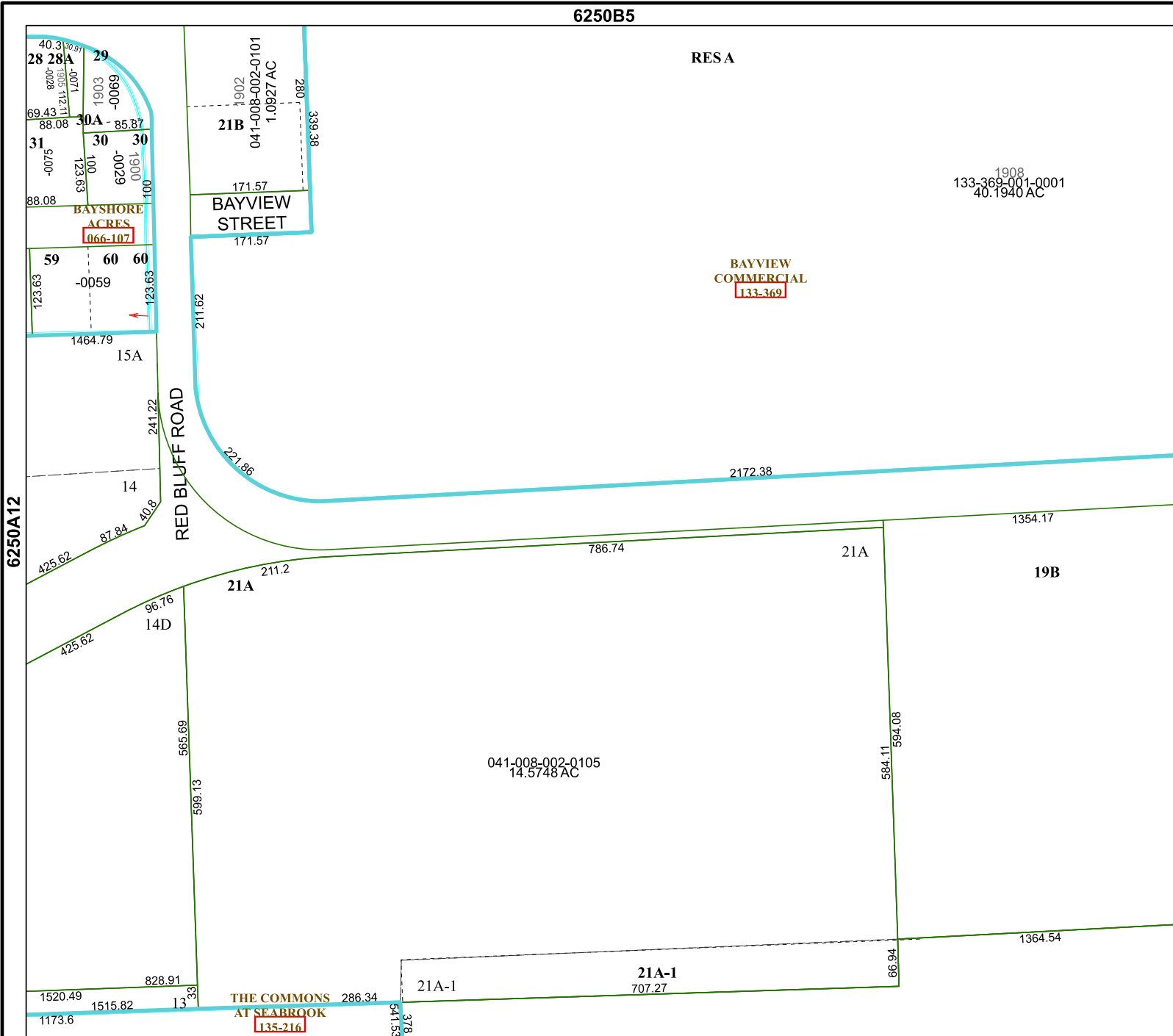
MAP LOCATION



FACET 6250B9

7	8	5	6	7
11	12	9	10	11
3	4	1	2	3

6250D1



6250A12

6250B10