

6252A8

6252A11

Harris Central Appraisal District



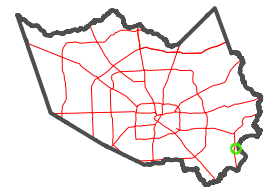
0 45 90 180 Feet

PUBLICATION DATE:
1/22/2024

Geospatial or map data maintained by the Harris Central Appraisal District is for informational purposes and may **not** have been prepared for or be suitable for legal, engineering, or surveying purposes. It does **not** represent an on-the-ground survey and only represents the approximate location of property boundaries.



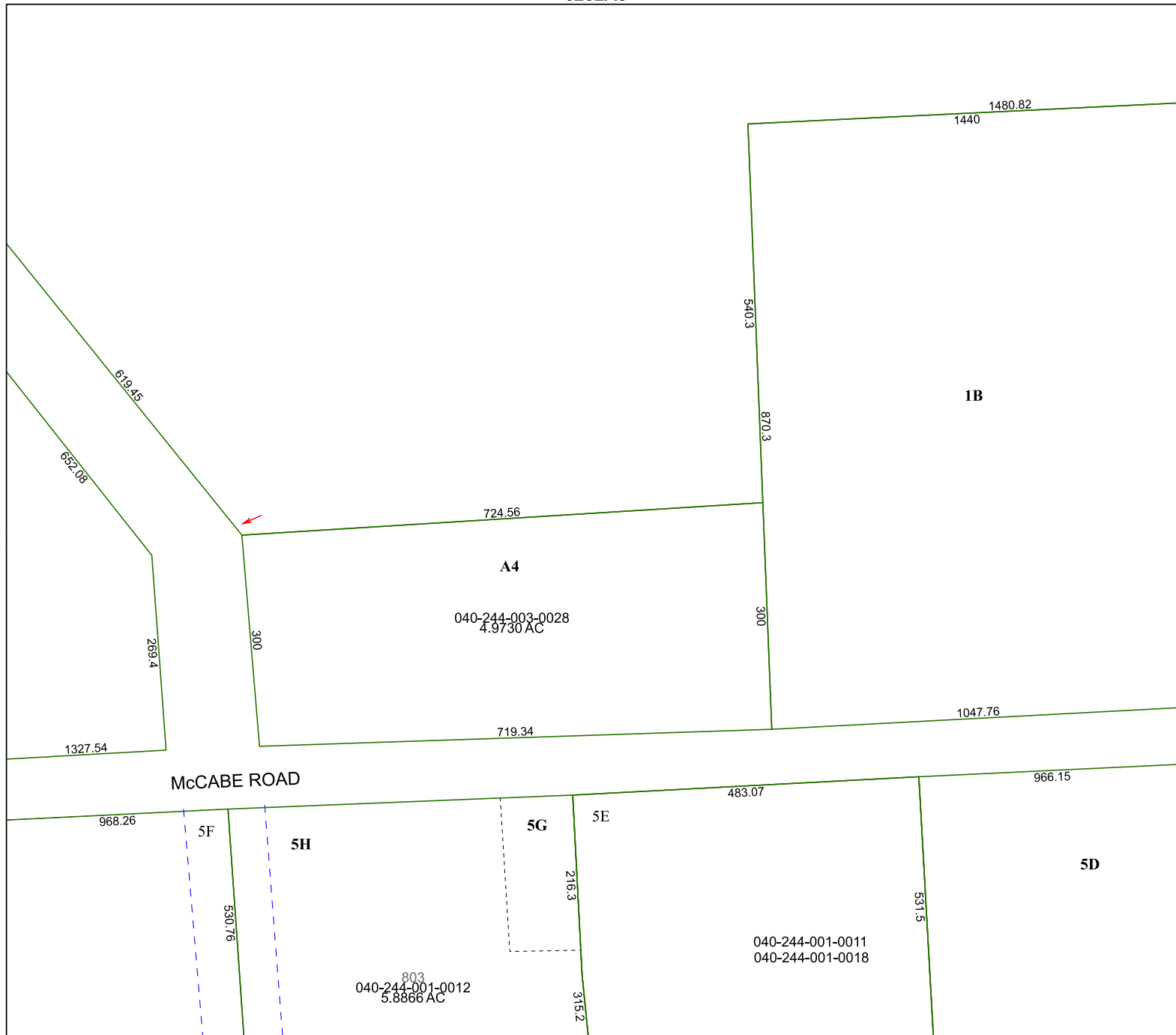
MAP LOCATION



FACET

6252A12

6	7	8	5	6
10	11	12	9	10
2	3	4	1	2



6252C4

6252B9