

6252A4

Harris Central Appraisal District



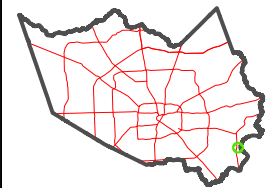
0 45 90 180 Feet

PUBLICATION DATE: 1/4/2023

Geospatial or map data maintained by the Harris Central Appraisal District is for informational purposes and may not have been prepared for or be suitable for legal, engineering, or surveying purposes. It does not represent an on-the-ground survey and only represents the approximate location of property boundaries.

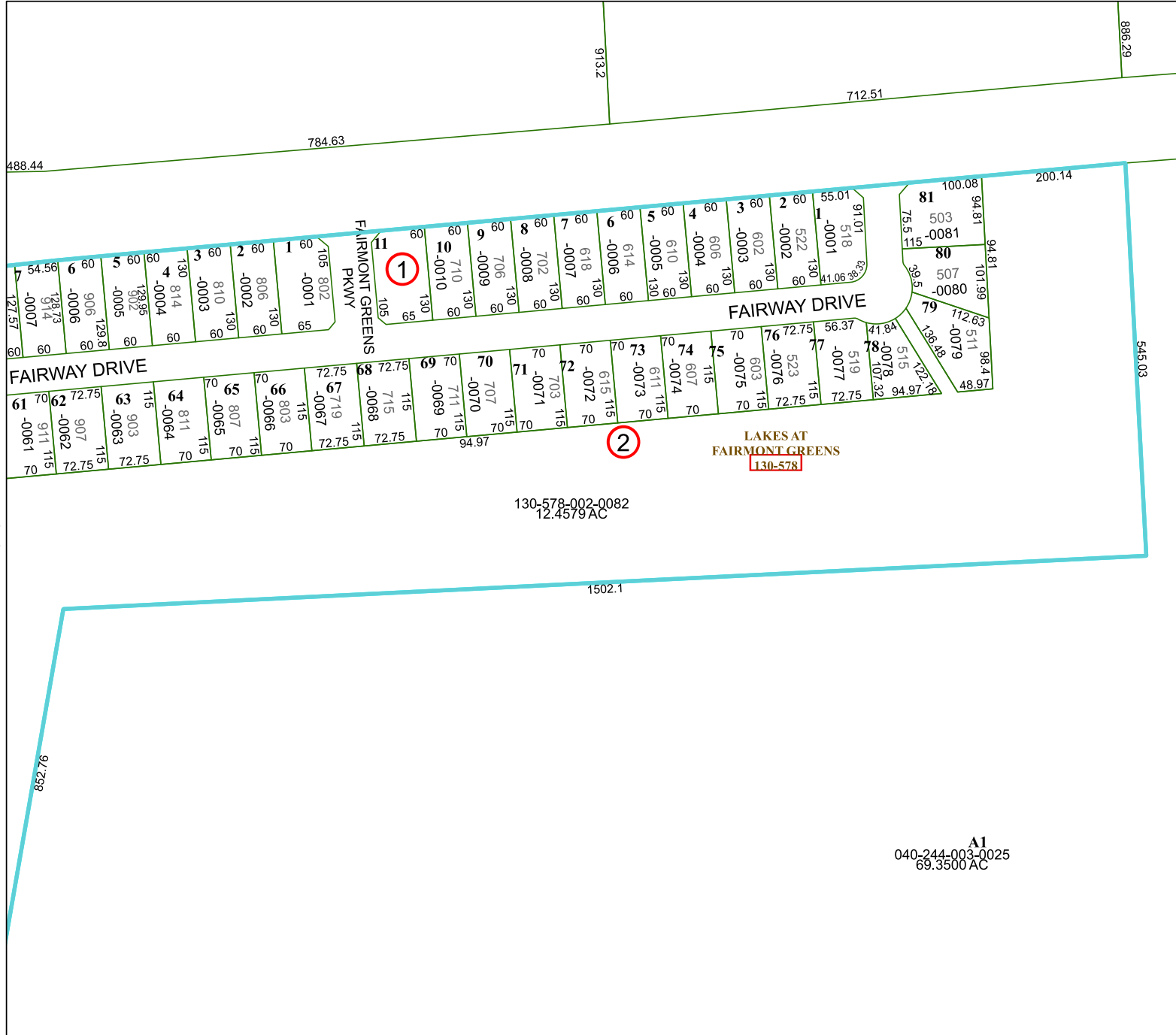


MAP LOCATION



FACET 6252A8

2	3	4	1	2
6	7	8	5	6
10	11	12	9	10



6252A12

A1
040-244-003-0025
69.3500 AC

130-578-002-0082
12.4579 AC

6252A7

6252B5