

6253D9

LA PORTE
023-149

Harris Central Appraisal District

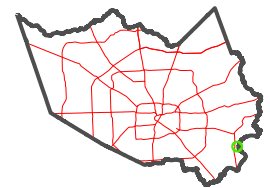


0 45 90 180
Feet

PUBLICATION DATE:
5/28/2025

Geospatial or map data
maintained by the Harris
Central Appraisal District
is for informational purposes
and may **not** have been
prepared for or be suitable
for legal, engineering, or
surveying purposes. It
does **not** represent an
on-the-ground survey and
only represents the
approximate location of
property boundaries.

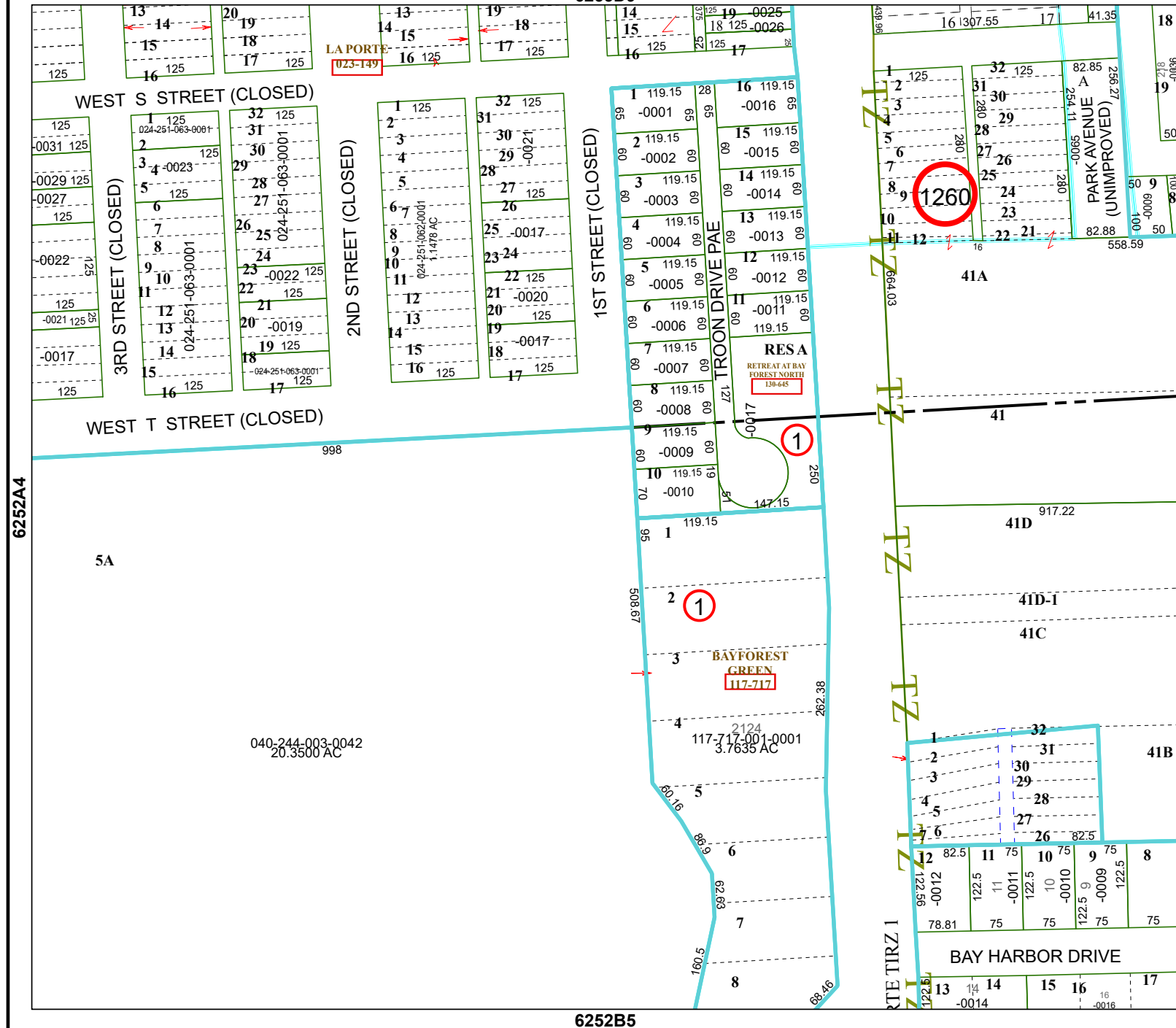
MAP LOCATION



FACET

6252B1

11	12	9	10	11
3	4	1	2	3
7	8	5	6	7



6252B5