

6252D1

SHADY RIVER ROAD

SHADY RIVER

CITY OF LA PORTE

CITY OF SHOREACRES

FAIRFIELD AVENUE

DRIVE

BAYOU

WEST FOREST AVENUE

DRIVE

6252D9

# Harris Central Appraisal District

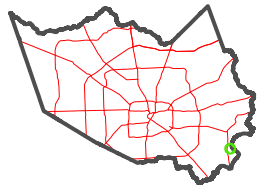


0 45 90 180 Feet

PUBLICATION DATE: 5/30/2024

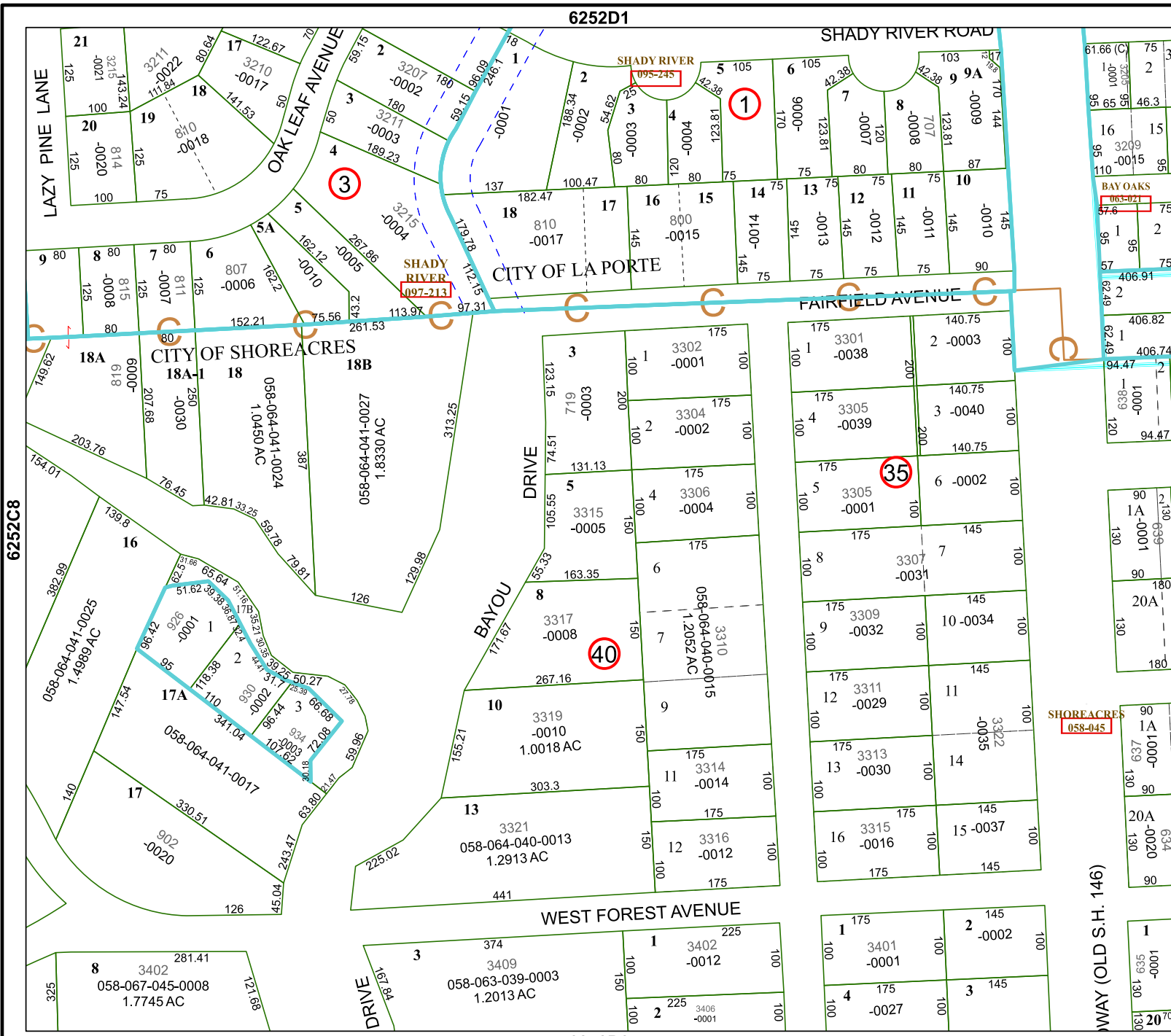
Geospatial or map data maintained by the Harris Central Appraisal District is for informational purposes and may not have been prepared for or be suitable for legal, engineering, or surveying purposes. It does not represent an on-the-ground survey and only represents the approximate location of property boundaries.

MAP LOCATION



## FACET 6252D5

3	4	1	2	3
7	8	5	6	7
11	12	9	10	11



6252C8

61.66 (C) 75  
1 3205 95 2 3  
95 65 95 46.3  
16 15  
95 3209  
110 -0015 95  
BAY OAKS  
063-021  
87.6 75  
1 2  
95 95  
57 406.91  
2 2  
62.49 406.82  
1 406.74  
94.47 2  
1-839  
120 94.47

6252D6

90 230  
1A 699  
130 1000-  
130 1000-  
90 180  
20A 180  
130 180

SHOREACRES  
058-045

90 1000-  
1A 1000-  
130 130  
90 130  
20A 634  
130 10020  
90 130

WAY (OLD S.H. 146)

1 1000-  
593 130  
130 2070

