

Harris Central Appraisal District

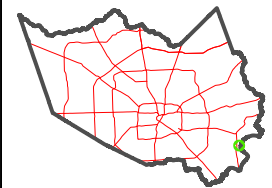


0 45 90 180 Feet

PUBLICATION DATE: 1/4/2023

Geospatial or map data maintained by the Harris Central Appraisal District is for informational purposes and may not have been prepared for or be suitable for legal, engineering, or surveying purposes. It does not represent an on-the-ground survey and only represents the approximate location of property boundaries.

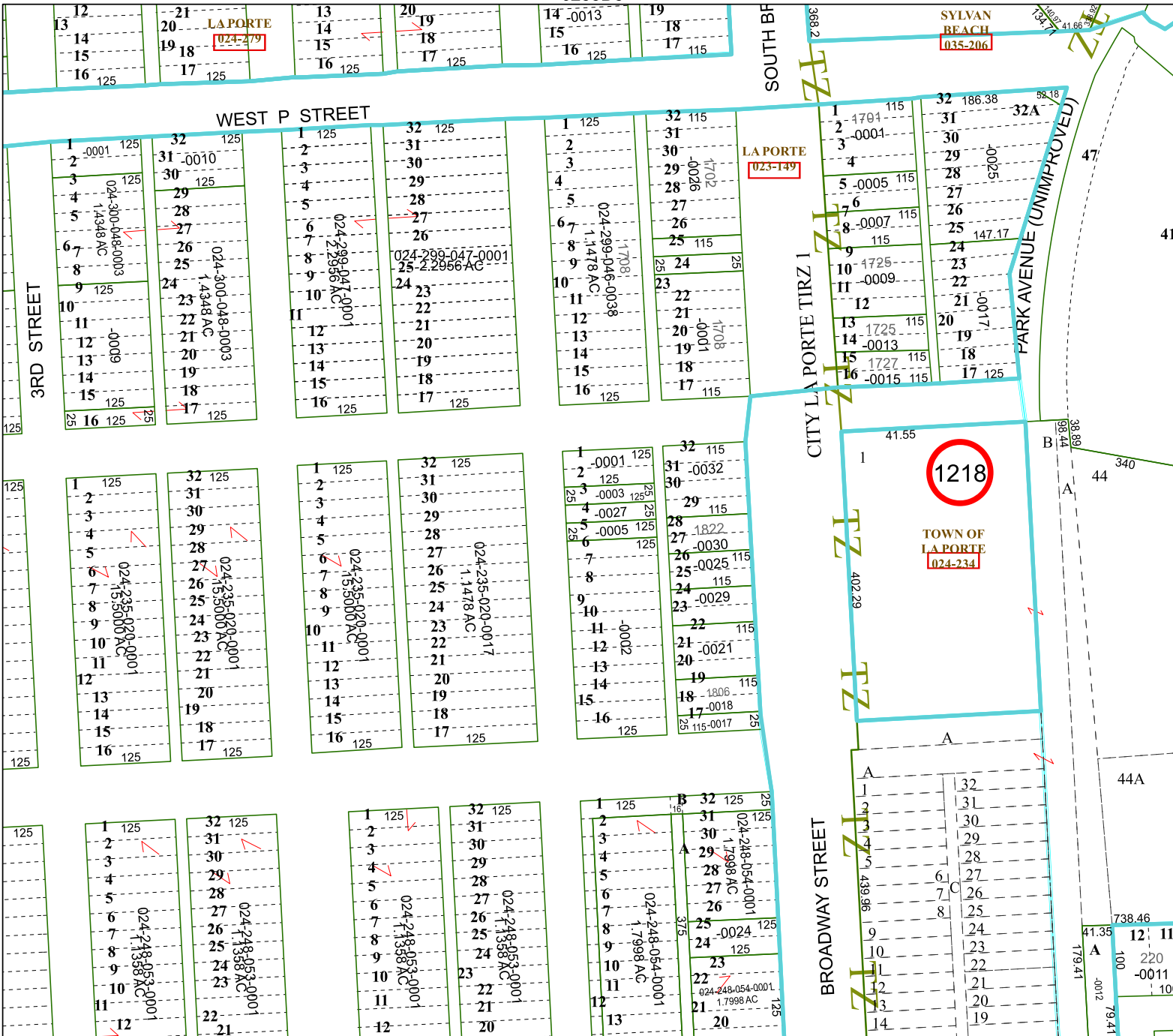
MAP LOCATION



FACET 6253D9

7	8	5	6	7
11	12	9	10	11
3	4	1	2	3

6253D5



1218

TOWN OF LA PORTE 024-234

6252B1

6253C12

6253D10