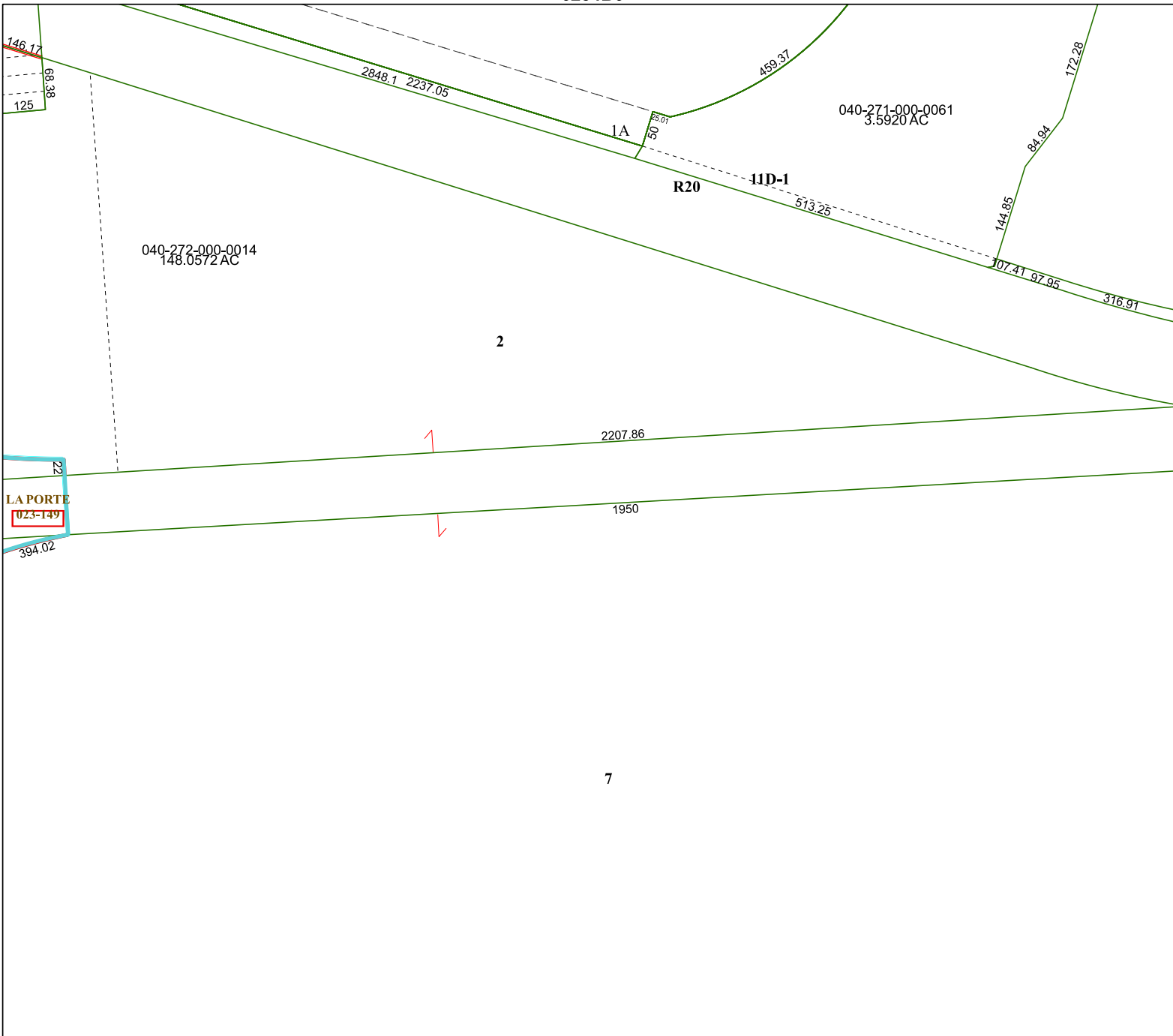


6254B6



6254B9

LA PORTE  
023-139

# Harris Central Appraisal District



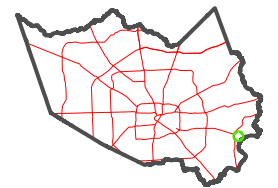
0 45 90 180 Feet

PUBLICATION DATE:  
3/13/2023

Geospatial or map data maintained by the Harris Central Appraisal District is for informational purposes and may **not** have been prepared for or be suitable for legal, engineering, or surveying purposes. It does **not** represent an on-the-ground survey and only represents the approximate location of property boundaries.



MAP LOCATION



## FACET 6254B10

8	5	6	7	8
12	9	10	11	12
4	1	2	3	4

6254D2