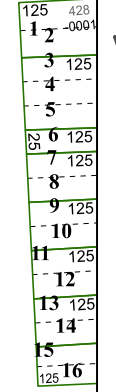
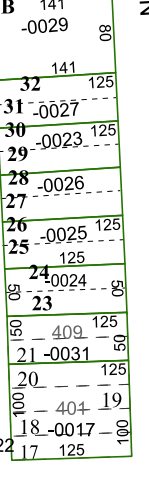
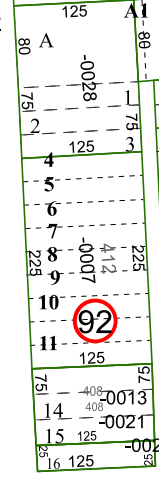
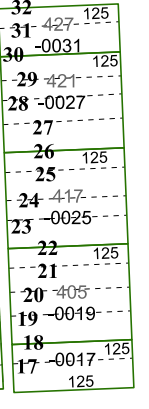
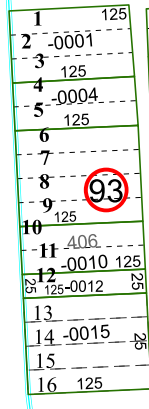
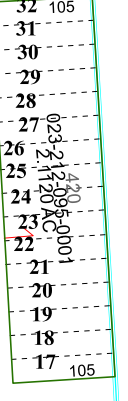
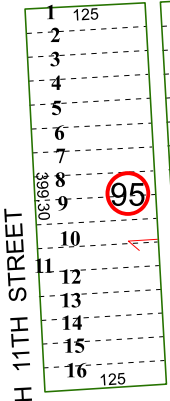
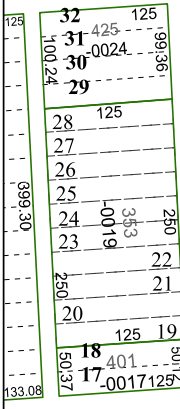
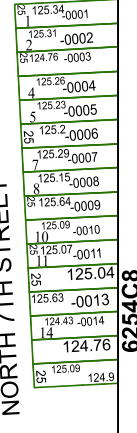
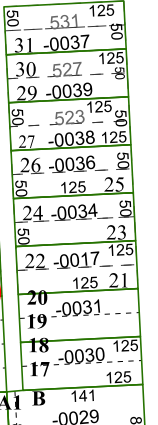
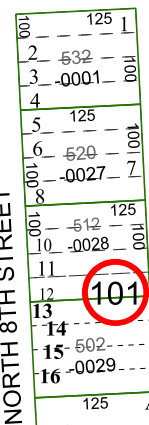
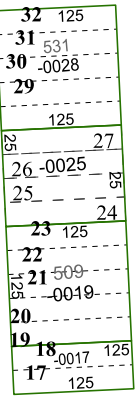
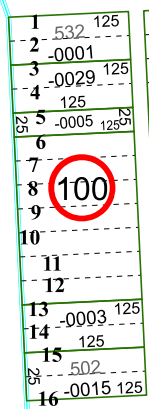
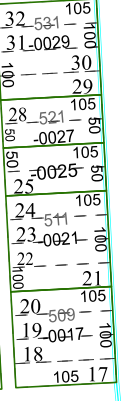
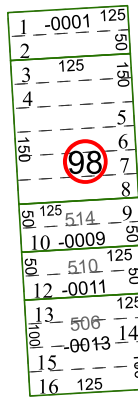
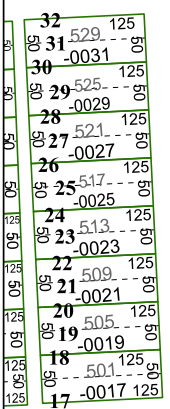
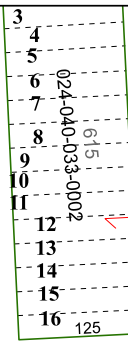
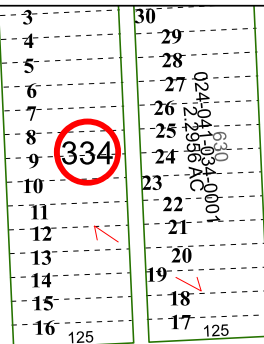
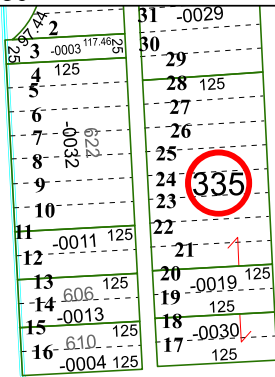
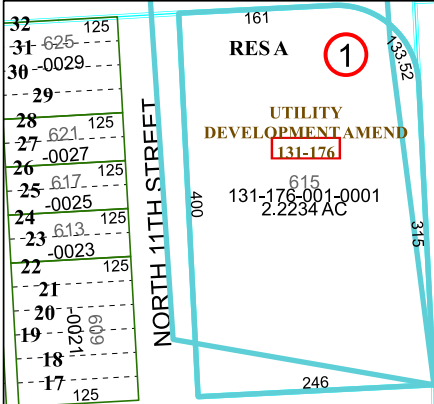


6254C3



6254C6

NORTH 11TH STREET

S.H. 146

LAPORTE
023-149

6254C11

NORTH 8TH STREET

NORTH 7TH STREET

Harris Central Appraisal District

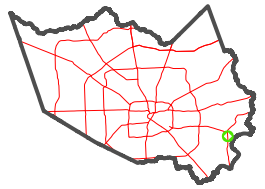


0 45 90 180 Feet

PUBLICATION DATE: 1/22/2024

Geospatial or map data maintained by the Harris Central Appraisal District is for informational purposes and may not have been prepared for or be suitable for legal, engineering, or surveying purposes. It does not represent an on-the-ground survey and only represents the approximate location of property boundaries.

MAP LOCATION



FACET 6254C7

1	2	3	4	1
5	6	7	8	5
9	10	11	12	9