



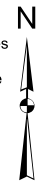
Harris Central Appraisal District



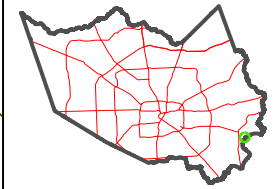
0 45 90 180 Feet

PUBLICATION DATE:
2/28/2024

Geospatial or map data maintained by the Harris Central Appraisal District is for informational purposes and may not have been prepared for or be suitable for legal, engineering, or surveying purposes. It does not represent an on-the-ground survey and only represents the approximate location of property boundaries.



MAP LOCATION



FACET 6254D12

6	7	8	5	6
10	11	12	9	10
2	3	4	1	2

6254D11

6254D8

6253B4

6354C9

BAY RIDGE PARK
006-186

SANDY POINT/P
117-355