

6254D1

CLIFFORD HALL
ENTERPRISES
136-261PORT OF HOUSTON
AUTHORITY
133-372

Harris Central Appraisal District

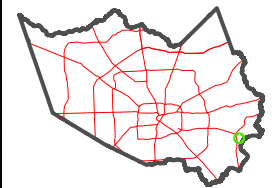


0 45 90 180
Feet

PUBLICATION DATE:
4/15/2025

Geospatial or map data
maintained by the Harris
Central Appraisal District
is for informational purposes
and may not have been
prepared for or be suitable
for legal, engineering, or
surveying purposes. It
does not represent an
on-the-ground survey and
only represents the
approximate location of
property boundaries.

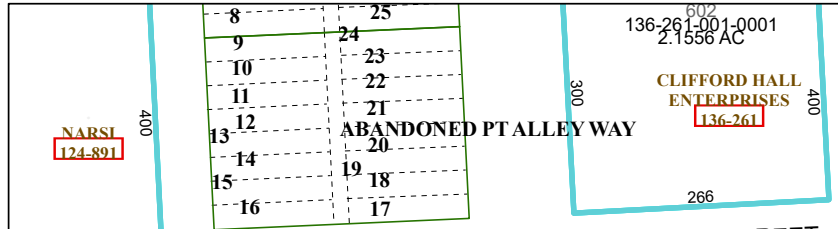
MAP LOCATION



FACET 6254D5

3	4	1	2	3
7	8	5	6	7
11	12	9	10	11

6254C8



NORTH E STREET

(NORTH IOWA STREET)

EAST MADISON STREET

ST MADISON STREET

(NORTH A STREET)

EAST TYLER STREET

WEST TYLER STREET

ADWAY AVENUE

6254D9

