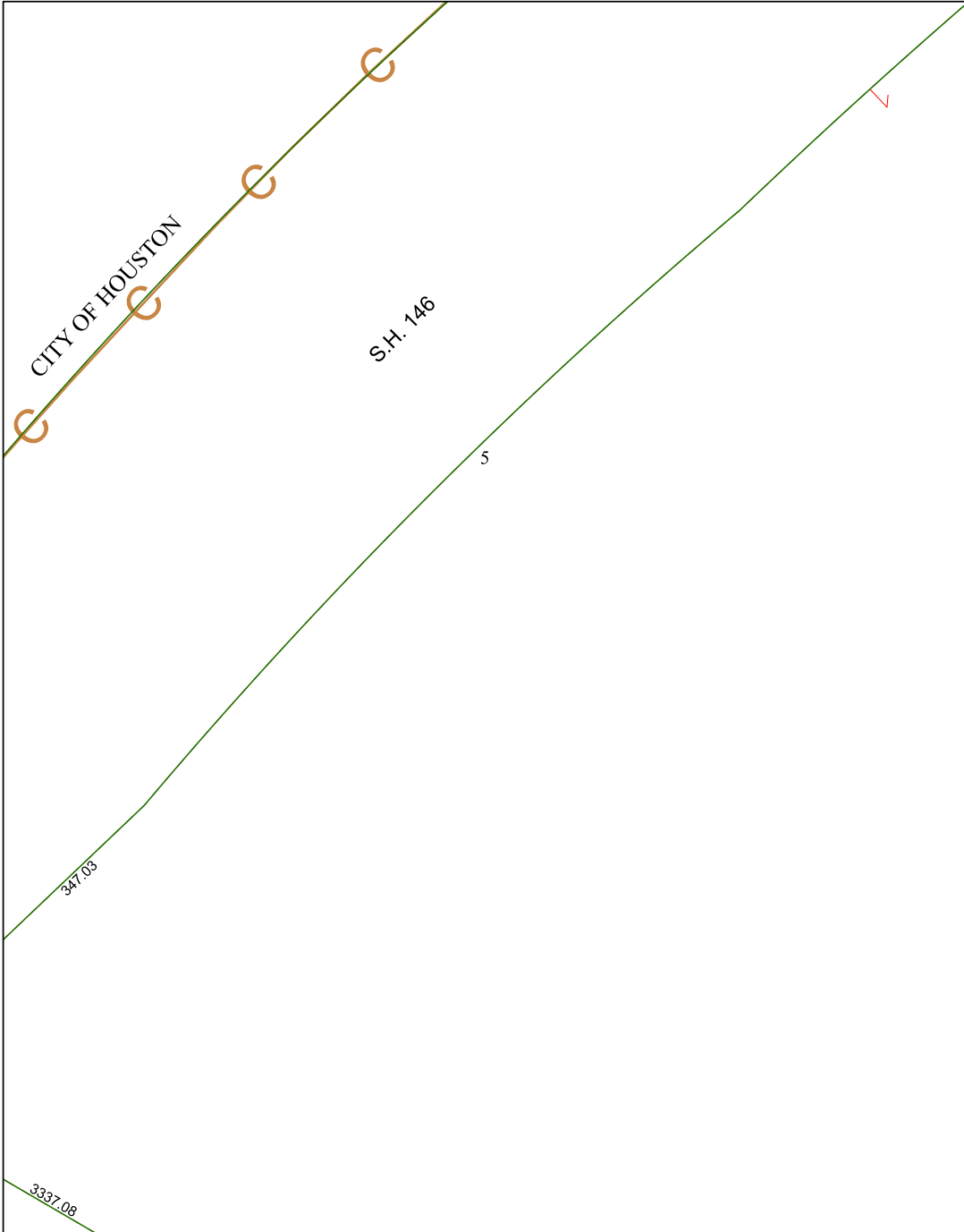


6255B2



Harris Central Appraisal District



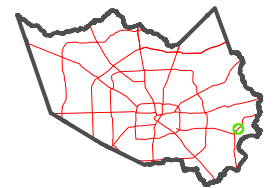
0 45 90 180
Feet

PUBLICATION DATE:
1/13/2025

Geospatial or map data maintained by the Harris Central Appraisal District is for informational purposes and may **not** have been prepared for or be suitable for legal, engineering, or surveying purposes. It does **not** represent an on-the-ground survey and only represents the approximate location of property boundaries.



MAP LOCATION



FACET 6255B6

4	1	2	3	4
8	5	6	7	8
12	9	10	11	12

6255B10

6255B5

6255B7

3337.08

347.03

5