

Harris Central Appraisal District



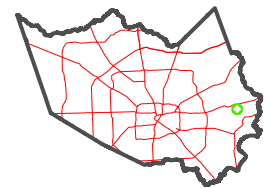
0 45 90 180 Feet

PUBLICATION DATE:
12/30/2023

Geospatial or map data maintained by the Harris Central Appraisal District is for informational purposes and may not have been prepared for or be suitable for legal, engineering, or surveying purposes. It does not represent an on-the-ground survey and only represents the approximate location of property boundaries.



MAP LOCATION

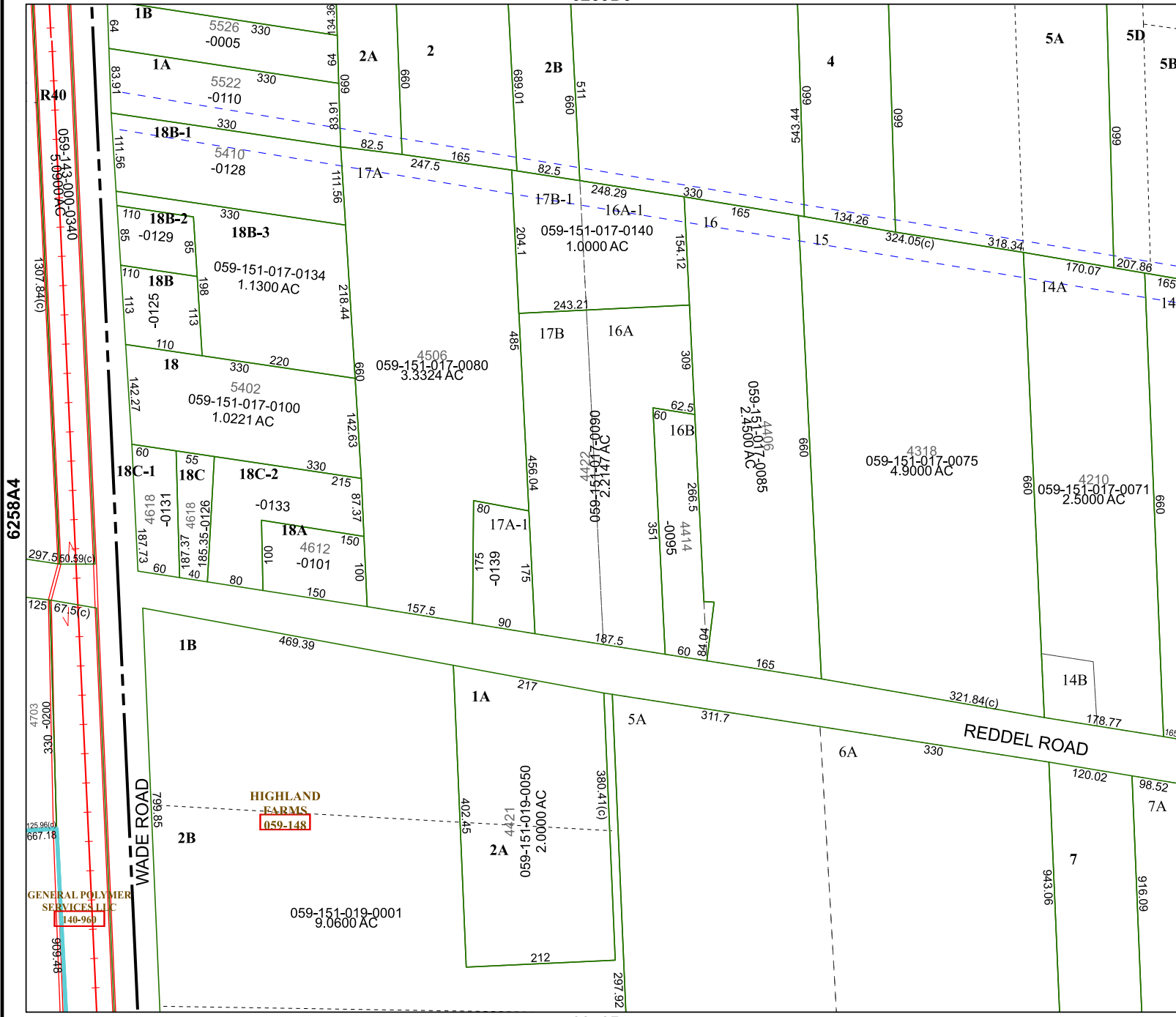


FACET 6258B1

11	12	9	10	11
3	4	1	2	3
7	8	5	6	7

6259D9

6258B5



R40

6258A4

6258B2

HIGHLAND FARMS
059-148

GENERAL POLYMER SERVICES LLC
140-96

WAIDE ROAD

REDEL ROAD