

6258D7

Harris Central Appraisal District



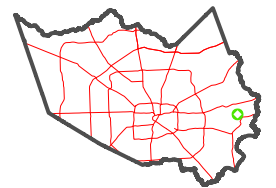
0 45 90 180 Feet

PUBLICATION DATE:
1/4/2023

Geospatial or map data maintained by the Harris Central Appraisal District is for informational purposes and may not have been prepared for or be suitable for legal, engineering, or surveying purposes. It does not represent an on-the-ground survey and only represents the approximate location of property boundaries.



MAP LOCATION



FACET 6258D11

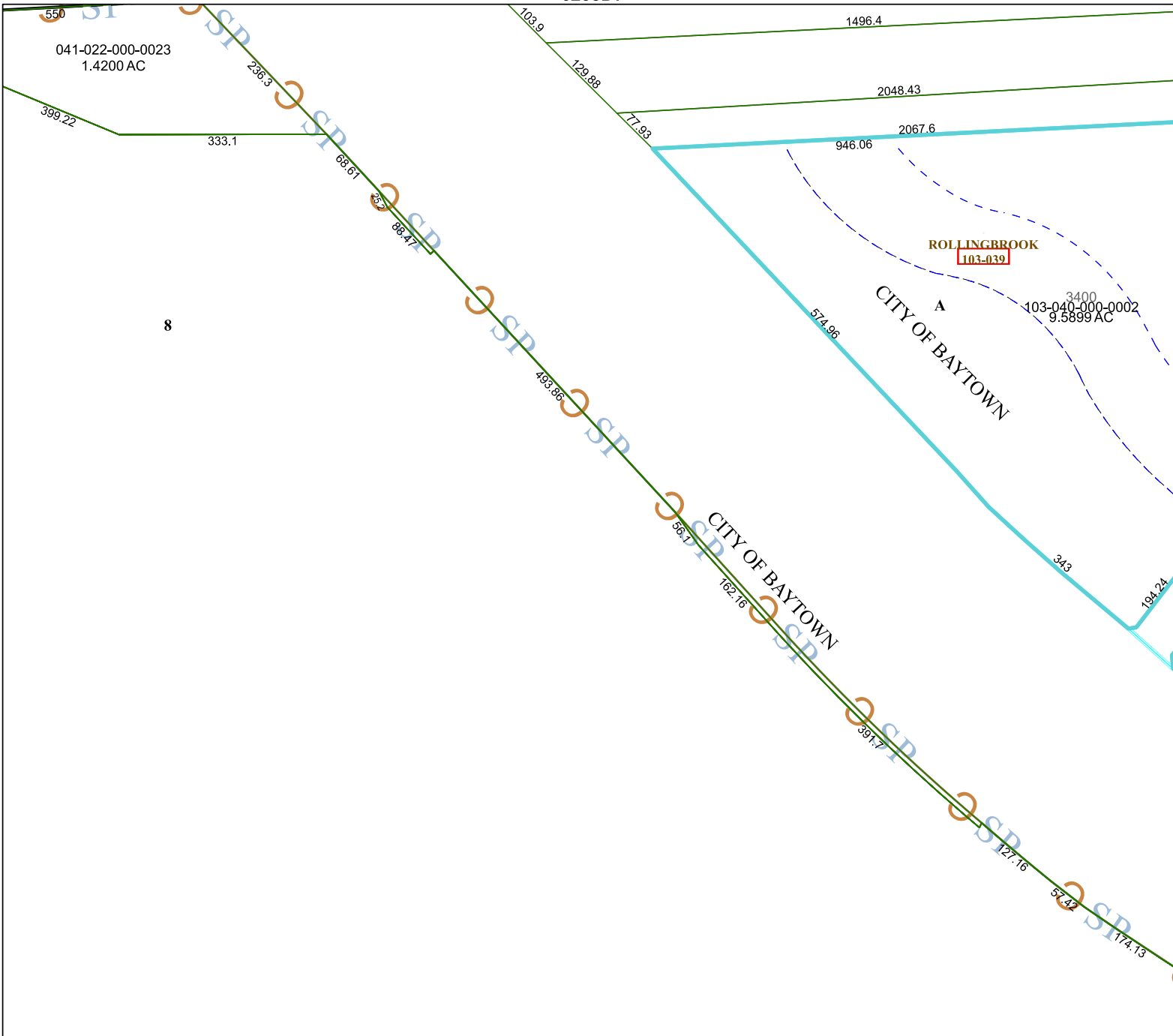
5	6	7	8	5
9	10	11	12	9
1	2	3	4	1

6257B3

6258D10

6258D12

8



041-022-000-0023
1.4200 AC

ROLLINGBROOK
103-039

3400
103-040-000-0002
9.5899 AC

CITY OF BAYTOWN

CITY OF BAYTOWN