

6259B3

Harris Central Appraisal District



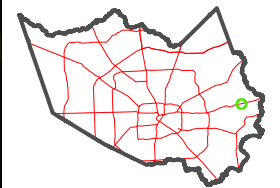
0 45 90 180 Feet

PUBLICATION DATE:
12/30/2023

Geospatial or map data maintained by the Harris Central Appraisal District is for informational purposes and may not have been prepared for or be suitable for legal, engineering, or surveying purposes. It does not represent an on-the-ground survey and only represents the approximate location of property boundaries.



MAP LOCATION

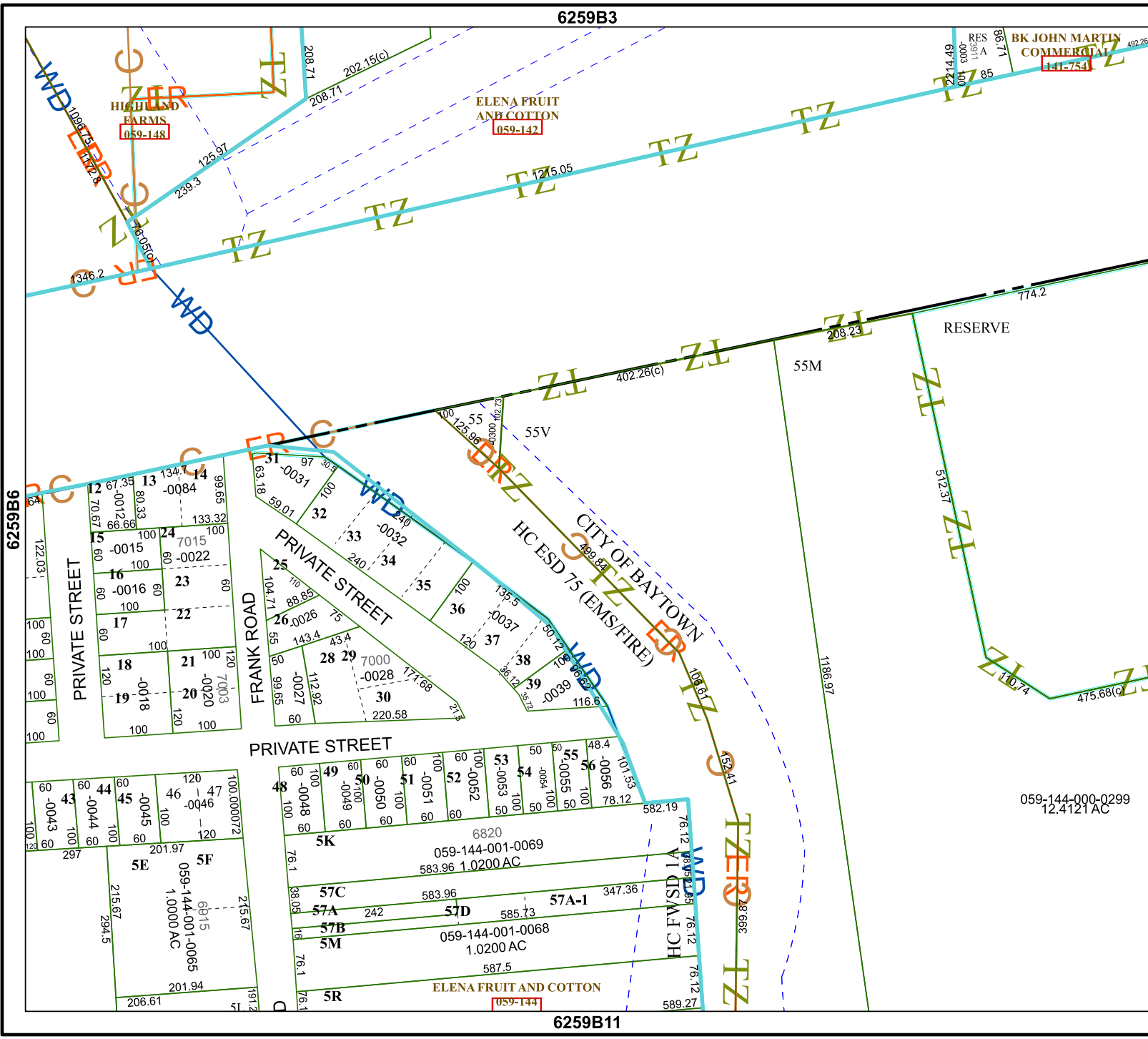


FACET

6259B7

1	2	3	4	1
5	6	7	8	5
9	10	11	12	9

6259B11



059-144-000-0299
12.4121 AC

6259B6

6259B2