

# Harris Central Appraisal District



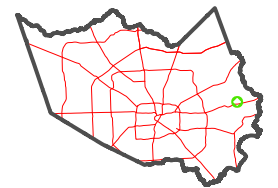
0 45 90 180 Feet

PUBLICATION DATE:  
5/21/2024

Geospatial or map data maintained by the Harris Central Appraisal District is for informational purposes and may not have been prepared for or be suitable for legal, engineering, or surveying purposes. It does not represent an on-the-ground survey and only represents the approximate location of property boundaries.



MAP LOCATION

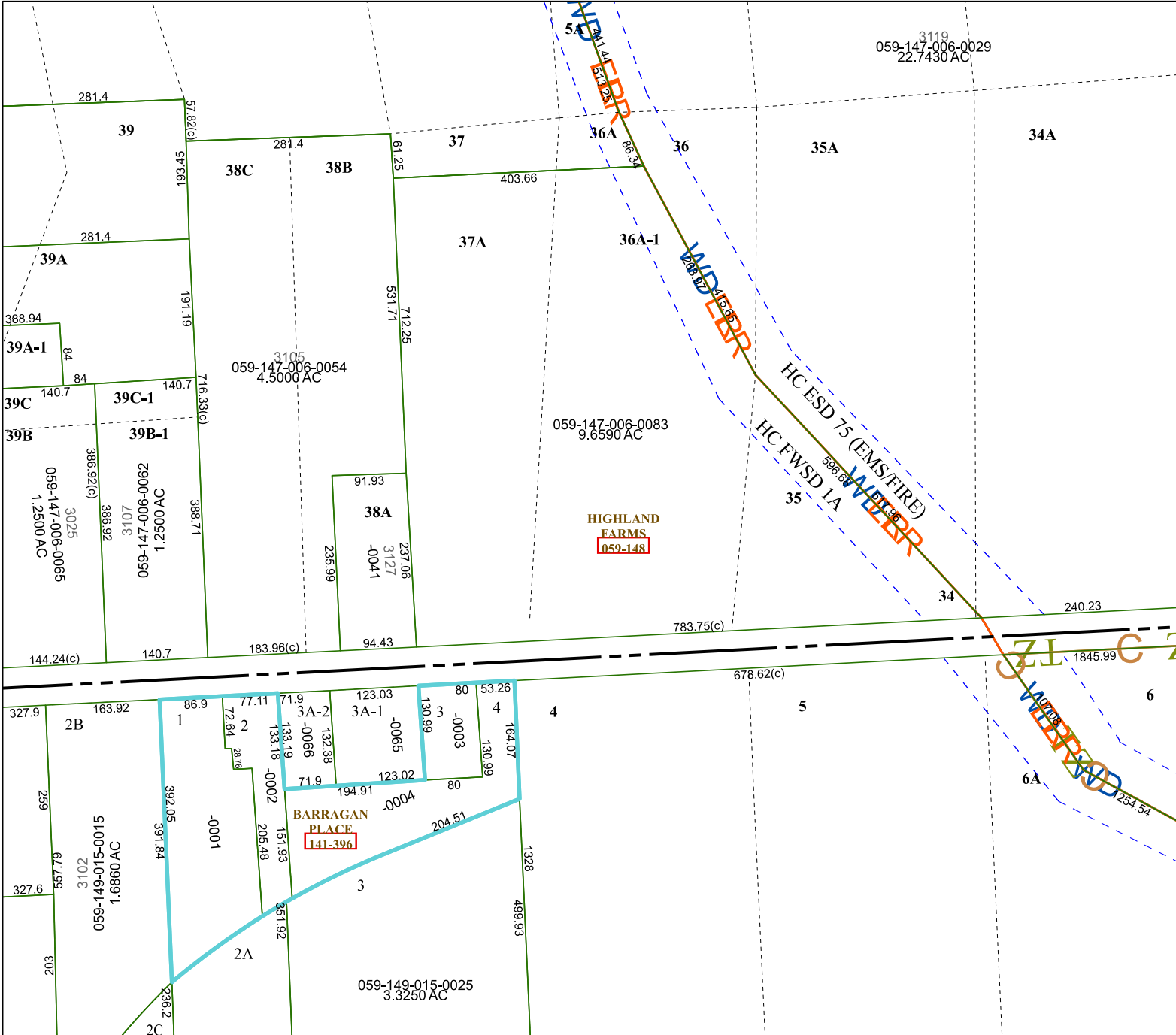


## FACET 6260D9

7	8	5	6	7
11	12	9	10	11
3	4	1	2	3

6260D5

3119  
059-147-006-0029  
22.7430 AC



6259B1

6260C12

6260D10