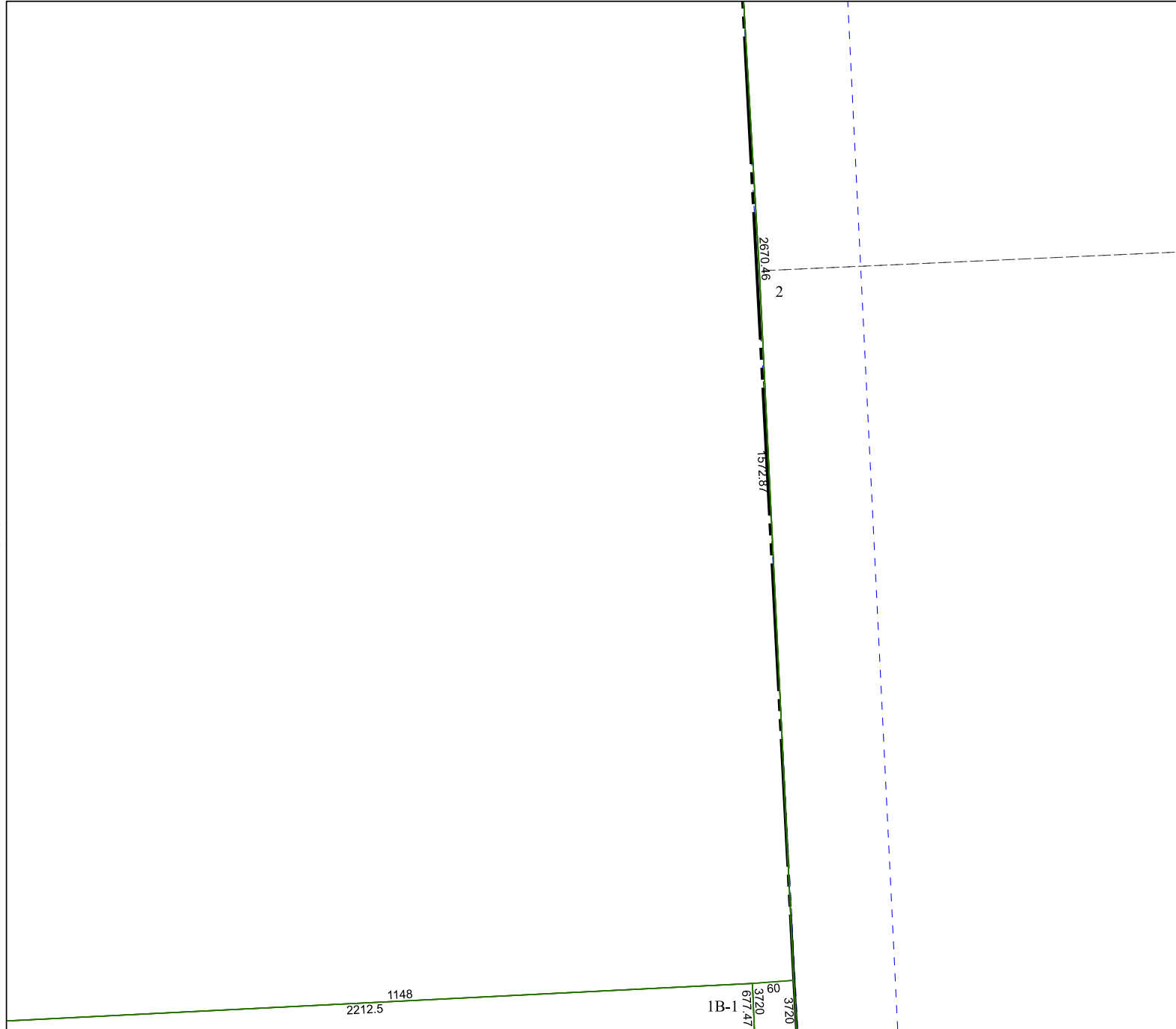


6262C11

6261A2



6261A7

# Harris Central Appraisal District



0 45 90 180  
Feet

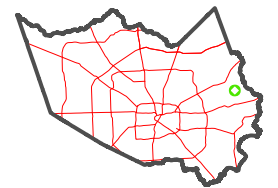
PUBLICATION DATE:  
1/4/2023

Geospatial or map data maintained by the Harris Central Appraisal District is for informational purposes and may **not** have been prepared for or be suitable for legal, engineering, or surveying purposes. It does **not** represent an on-the-ground survey and only represents the approximate location of property boundaries.



6261A4

### MAP LOCATION



## FACET

### 6261A3

9	10	11	12	9
1	2	3	4	1
5	6	7	8	5