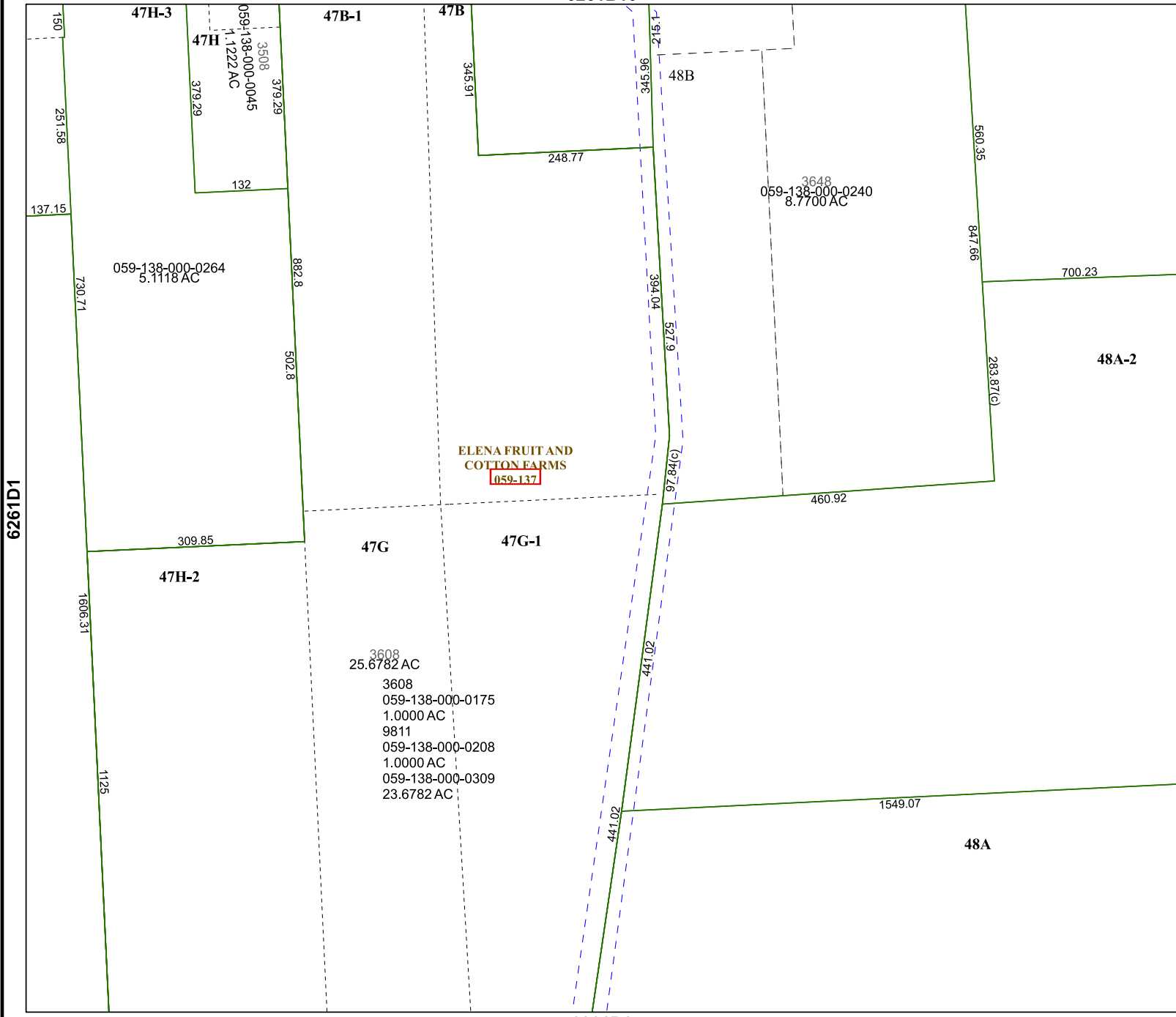


6261B10



6261D6

# Harris Central Appraisal District



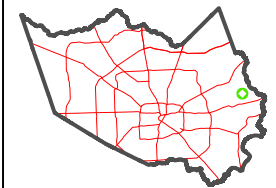
0 45 90 180 Feet

PUBLICATION DATE:  
1/22/2024

Geospatial or map data maintained by the Harris Central Appraisal District is for informational purposes and may not have been prepared for or be suitable for legal, engineering, or surveying purposes. It does not represent an on-the-ground survey and only represents the approximate location of property boundaries.



## MAP LOCATION



# FACET 6261D2

12	9	10	11	12
4	1	2	3	4
8	5	6	7	8

6261D1

6261D3