

6264D2

Harris Central Appraisal District



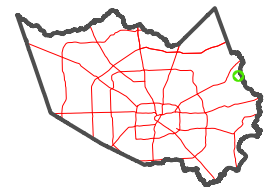
0 45 90 180 Feet

PUBLICATION DATE: 1/4/2023

Geospatial or map data maintained by the Harris Central Appraisal District is for informational purposes and may not have been prepared for or be suitable for legal, engineering, or surveying purposes. It does not represent an on-the-ground survey and only represents the approximate location of property boundaries.



MAP LOCATION



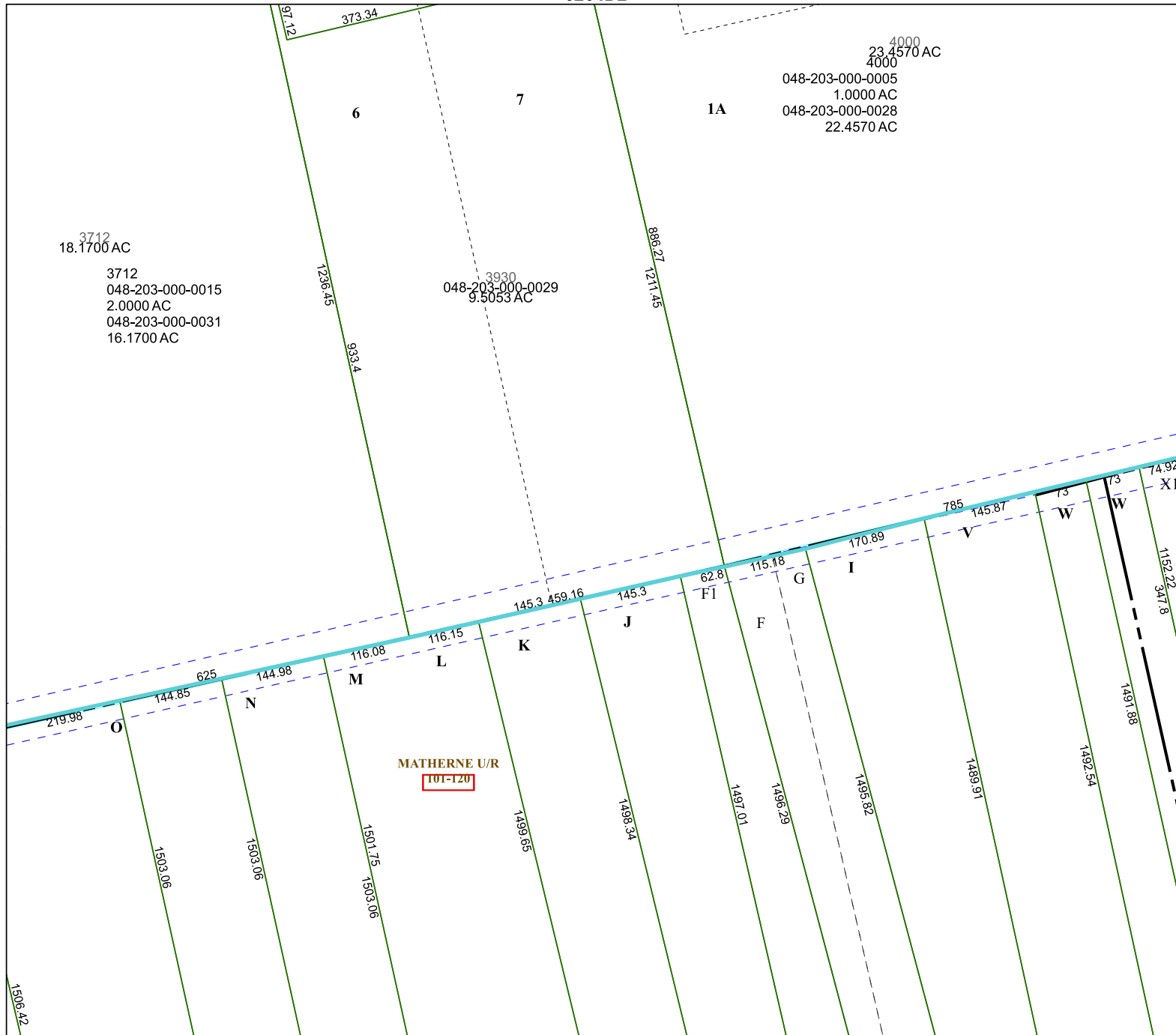
FACET 6264D6

4	1	2	3	4
8	5	6	7	8
12	9	10	11	12

6264D10

6264D5

6264D7



3712
18.1700 AC
3712
048-203-000-0015
2.0000 AC
048-203-000-0031
16.1700 AC

3930
048-203-000-0029
9.5053 AC

4000
23.4570 AC
4000
048-203-000-0005
1.0000 AC
048-203-000-0028
22.4570 AC

MATHERNE U/R
101-120