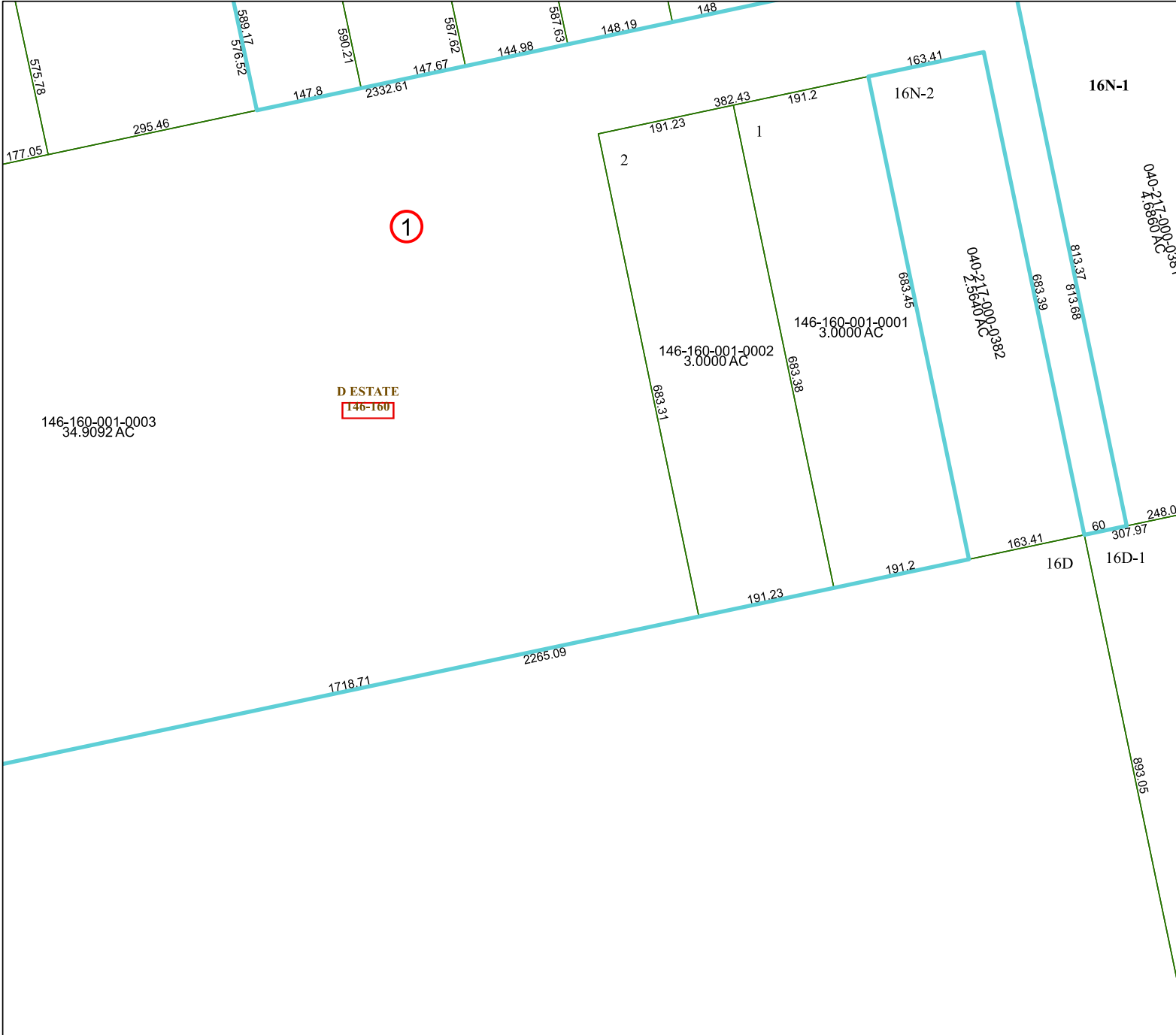


6265A8



1

D ESTATE
146-160

Harris Central Appraisal District



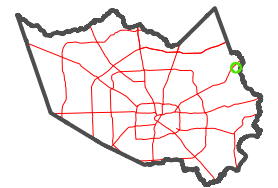
0 45 90 180 Feet

PUBLICATION DATE:
1/4/2023

Geospatial or map data maintained by the Harris Central Appraisal District is for informational purposes and may not have been prepared for or be suitable for legal, engineering, or surveying purposes. It does not represent an on-the-ground survey and only represents the approximate location of property boundaries.



MAP LOCATION



FACET 6265A12

6	7	8	5	6
10	11	12	9	10
2	3	4	1	2

6265C4

6265A11

6265B9

16N-1

16N-2

16D

16D-1