

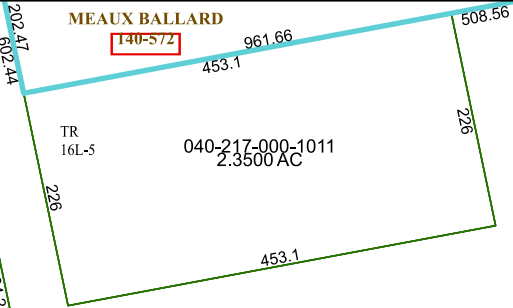
6265B7

MEAUX BALLARD

140-572

TR
16L-5

040-217-000-1011
2.3500 AC



6265B10

TR
16L-4

212.32

2C-1

6265D3

Harris Central Appraisal District



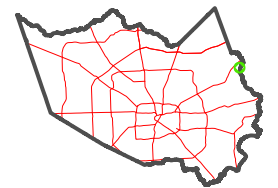
0 45 90 180 Feet

PUBLICATION DATE:
6/22/2023

Geospatial or map data maintained by the Harris Central Appraisal District is for informational purposes and may **not** have been prepared for or be suitable for legal, engineering, or surveying purposes. It does **not** represent an on-the-ground survey and only represents the approximate location of property boundaries.



MAP LOCATION



FACET 6265B11

5	6	7	8	5
9	10	11	12	9
1	2	3	4	

6265B12

1678.69

58.37